

IMPACT SOCKETS & ACCESSORIES

- 1/4" Drive Impact Socket
- 3/8" Drive Impact Socket, Bit Socket & Accessory
- 1/2" Drive Impact Socket, Bit Socket Accessory
- 3/4" Drive Impact Socket, Bit Socket & Accessory
- 1" Drive Impact Socket & Accessory
- 1-1/2" Drive Impact Socket & Accessory
- 2-1/2" Drive Impact Socket
- 3-1/2" Drive Impact Socket

Professional production & quality control



DIN 50%

KING TONY impact socket 50% higher torque on performance.

Quality control also ensure that a sufficient level of production output. King Tony uses advance technology to inspect tiny difference on each step. Our Impact socket reach 50% higher torque than DIN standards.



18 KING TONY CR-MO

KING TONY CR-MO
S5-517EM
CR-MO

KING TONY CR-MO

KING TONY CR-MO

KING TONY

KING TONY

KING TONY CR-MO

Standard Impact Socket & Rail Set

2535M

1/4"

• DIN 3129, ISO 2725-2

KT No. & D1



KT NO.	mm	D1 mm	D2 mm	l mm	L mm		
253504M	4	7.5	13	4	23	12	20 / 600
253545M	4.5	8.1	13	5	23	12	20 / 600
253505M	5	8.8	13	6	23	12	20 / 600
253555M	5.5	9.4	13	6	23	13	20 / 600
253506M	6	10.0	13	7	23	13	20 / 600
253507M	7	11.3	13	7	23	13	20 / 600
253508M	8	12.5	13	8	23	13	20 / 600
253509M	9	13.8	13	8	23	15	12 / 360
253510M	10	15.0	13	9	23	18	12 / 360
253511M	11	16.3	13	9	23	20	12 / 360
253512M	12	17.5	13	9	23	21	12 / 360
253513M	13	18.8	13	9	23	22	12 / 360
253514M	14	19.8	13	9	23	23	10 / 300

2413MP8

new

1/4"

• Socket rail 280mmL



13 PC.

Contents

0.25 50

2535M	4, 4.5, 5, 5.5, 6, 7, 8, 9, 10, 11, 12, 13, 14
-------	--

8721116

Standard Impact Socket

KT No. & D1

3535M

3/8"

• DIN 3129, ISO 2725-2



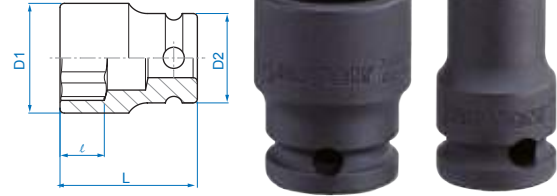
KT NO.	mm	D1 mm	D2 mm	l mm	L mm		
353506M	6	10.6	19	5	32	31	12 / 360
353507M	7	11.8	19	5	32	33	12 / 360
353508M	8	13.2	19	6	32	34	12 / 360
353509M	9	14.5	19	6	32	39	12 / 360
353510M	10	15.5	19	7	32	38	12 / 360
353511M	11	17.0	19	7	32	38	12 / 360
353512M	12	18.2	19	8	32	41	12 / 360
353513M	13	19.4	22	9	32	53	10 / 200
353514M	14	20.7	22	9	32	54	10 / 200
353515M	15	22.0	22	10	32	55	10 / 200
353516M	16	23.8	22	10	32	57	10 / 200
353517M	17	24.8	22	11	32	60	10 / 200
353518M	18	25.8	22	11	32	63	10 / 200
353519M	19	27.6	22	13	32	64	10 / 160

KT NO.	mm	D1 mm	D2 mm	l mm	L mm		
353515M	15	22.0	22	10	32	55	10 / 200
353516M	16	23.8	22	10	32	57	10 / 200
353517M	17	24.8	22	11	32	60	10 / 200
353518M	18	25.8	22	11	32	63	10 / 200
353519M	19	27.6	22	13	32	64	10 / 160

3535S

3/8"

• ANSI / ASME B107.2



KT NO.	inch	D1 mm	D2 mm	l mm	L mm		
353508S	1/4	10.8	19	5	32	31	12 / 360
353510S	5/16	13.0	19	6	32	34	12 / 360
353512S	3/8	15.3	19	7	32	38	12 / 360
353514S	7/16	17.0	19	7	32	38	12 / 360
353516S	1/2	18.2	19	9	32	53	12 / 360
353518S	9/16	20.7	22	9	32	53	10 / 200
353520S	5/8	23.8	22	10	32	57	10 / 200
353522S	11/16	24.5	22	11	32	60	10 / 200
353524S	3/4	27.0	22	11	32	64	10 / 160

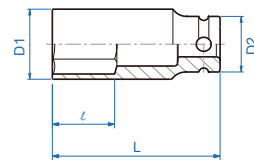
Deep Impact Socket

KT No. & D1

3435M

3/8"

• DIN 3121



KT NO.	mm	D1 mm	D2 mm	l mm	L mm		
343506M	6	10.6	19	10	65	62	6 / 120
343507M	7	11.8	19	10	65	66	6 / 120
343508M	8	13.2	19	12	65	71	6 / 120
343509M	9	14.5	19	12	65	76	6 / 120
343510M	10	15.5	19	12	65	82	6 / 120
343511M	11	17.0	19	13	65	84	6 / 120
343512M	12	18.2	19	14	65	93	6 / 120
343513M	13	19.4	22	14	65	113	6 / 120
343514M	14	20.7	22	14	65	114	6 / 120
343515M	15	22.0	22	16	65	125	6 / 120
343516M	16	23.8	22	16	65	126	6 / 96
343517M	17	24.8	22	17	65	138	6 / 96
343518M	18	25.8	22	18	65	144	6 / 96
343519M	19	27.6	22	20	65	154	6 / 96
343520M	20	28.3	22	20	65	148	6 / 96
343521M	21	29.5	22	22	65	156	6 / 96
343522M	22	30.8	22	22	65	172	5 / 60
343523M	23	32.0	22	24	65	177	5 / 60
343524M	24	32.5	22	24	65	180	5 / 60

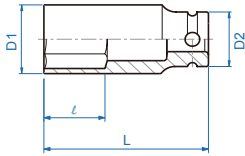
Deep Impact Socket

KT No. & D1

3435S

3/8"

- ANSI / ASME B107.2



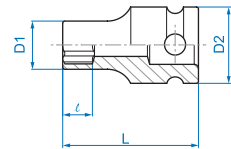
KT NO.	inch	D1 mm	D2 mm	l mm	L mm		
343508S	1/4	10.8	19	10	63.5	62	6 / 120
343510S	5/16	13.0	19	12	63.5	71	6 / 120
343512S	3/8	15.3	19	12	63.5	82	6 / 120
343514S	7/16	17.0	19	13	63.5	84	6 / 120
343516S	1/2	18.2	19	14	63.5	113	6 / 120
343518S	9/16	20.7	22	14	65	114	6 / 120
343520S	5/8	23.8	22	16	65	126	6 / 96
343522S	11/16	24.5	22	17	65	138	6 / 96
343524S	3/4	27.0	22	20	65	154	6 / 96
343526S	13/16	29.5	22	22	65	156	6 / 96
343528S	7/8	30.8	22	22	65	172	5 / 60

Impact Star Socket

3575M

3/8"

- For torx external screw
- DIN 3121



KT NO.	Size	D1 mm	D2 mm	l mm	L mm		
357505M	E5	9.6	19	4.0	32	31	12 / 360
357506M	E6	10.2	19	5.0	32	31	12 / 360
357507M	E7	10.8	19	6.0	32	33	12 / 360
357508M	E8	11.5	19	6.5	32	33	12 / 360
357510M	E10	12.0	19	7.0	32	34	12 / 360
357512M	E12	14.0	19	9.0	32	34	12 / 360
357514M	E14	17.0	19	9.5	32	40	12 / 360

Impact Bit Socket



- Air pressure must not exceed 90PSI (6.3bar)
- Adjust your air tool to its lowest torque output, should this torque level not be enough, increase it gradually

3051

3/8"

- For phillips head screw
- DIN 3121



KT NO.	No.	L mm		
305101	PH1	55	33	12 / 360
305102	PH2	55	35	12 / 360
305103	PH3	55	40	12 / 360
305104	PH4	55	45.8	12 / 360

3052

3/8"

- For slotted head screw
- DIN 3121



KT NO.	Tip width mm	L mm		
305255	5.5	55	32.2	12 / 360
305208	8	55	38.4	12 / 360
305210	10	55	45	12 / 360

3055M

3/8"

- For hexagon head screw
- DIN 3121



KT NO.	mm	L mm	Max. torq Nm		
305504M	H4	55	20.8	35	12 / 360
305505M	H5	55	36.0	38	12 / 360
305506M	H6	55	62.4	40	12 / 360
305507M	H7	55	97.0	66	12 / 360
305508M	H8	55	144.0	45	12 / 360
305510M	H10	55	264.0	50	12 / 360
305512M	H12	55	480.0	60	12 / 360
305514M	H14	55	650.0	77	12 / 288
305516M	H16	55	680.0	79	12 / 288
305517M	H17	55	715.0	85	12 / 288

3055S

3/8"

- For hexagon head
- DIN 3121



KT NO.	inch	L mm	Max. torq Nm		
305504S	1/8	55	18.8	28	12 / 360
305545S	9/64	55	20.8	29	12 / 360
305505S	5/32	55	22.5	30	12 / 360
305506S	3/16	55	36.0	35	12 / 360
305507S	7/32	55	62.4	38	12 / 360
305508S	1/4	55	93.6	39	12 / 360
305510S	5/16	55	144.0	46	12 / 360
305512S	3/8	55	264.0	53	12 / 360
305516S	1/2	55	518.0	70	12 / 360



Impact Bit Socket

KT No. & D1

3065M 3/8"

- For hexagon head screw
- DIN 3121



KT NO.	mm	L mm	Max. torq Nm		
306504M	H4	90	20.8	42	8 / 160
306505M	H5	90	36.0	48	8 / 160
306506M	H6	90	62.4	55	8 / 160
306508M	H8	90	144.0	73	8 / 160
306510M	H10	90	264.0	96	8 / 160

3053 3/8"

- For torx internal screw
- DIN 3121



KT NO.	Size	L mm		
305310	T10	55	30	12 / 360
305315	T15	55	30	12 / 360
305320	T20	55	32	12 / 360
305325	T25	55	32	12 / 360
305327	T27	55	33	12 / 360
305330	T30	55	34	12 / 360
305340	T40	55	37	12 / 360
305345	T45	55	41	12 / 360
305350	T50	55	44	12 / 360
305355	T55	55	58	12 / 288
305360	T60	55	65	12 / 288

Impact Accessory

KT No. & D1

3862P 3/8"

- Adapter & with ball
- Convert to 1/4" drive
- DIN 3121



KT NO.	Spec.	D mm		
3862P	3/8" F x 1/4" M	20.8	33	24 / 384

3864P 3/8"

- Adapter & with ball
- Convert to 1/2" drive
- DIN 3121



KT NO.	Spec.	D mm		
3864P	3/8" F x 1/2" M	20.8	51	24 / 384

3147 3/8"

- Bit holder



KT NO.	Size	L mm		
314708S	1/4"	40	44	12 / 420
314710S	5/16"	40	45	12 / 420
314710M	10mm	40	46	12 / 420

3260P 3/8"

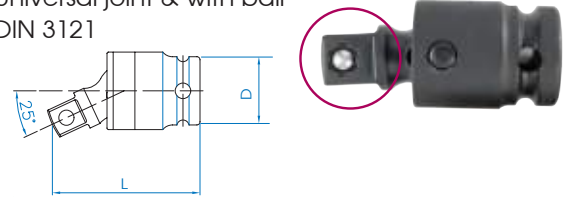
- Extension bar & with ball
- DIN 3121



KT NO.	Overall length inch	mm		
3260-03P	3	75	96	6 / 120
3260-04P	4	100	98.6	8 / 160
3260-05P	5	125	145	8 / 144
3260-06P	6	150	168	5 / 100
3260-08P	8	200	216	6 / 72
3260-10P	10	250	230	6 / 54

3796P 3/8"

- Universal joint & with ball
- DIN 3121



KT NO.	Overall length inch	mm	D mm		
3796P	2	50	22	83.4	10 / 200

90608 90609 3/8"

- Locking pin
- Chrome vanadium steel
- DIN 3129



KT NO.	Desp.	∅	d / ℓ	Applied to socket sizes
90608	pin	2.5	14	3535M (6~12 mm) 3535S (1/4-1/2 inch)
				3435M (6~12 mm) 3435S (1/4-1/2 inch)
				3055M (4~12 mm) 3055S (3/16-1/2 inch)
				3065M (4~10 mm) 3053 (T10-T15)
				3575M (E5-E14)
3053.3055.3065.3147.3862.3864				
90609	pin	2.5	16	3535M (13~19 mm) 3535S (9/16-3/4 inch)
				3435M (13~24 mm) 3435S (9/16-7/8 inch)
				3260.3796

Impact Bit Socket Set

3406MP

3/8"

- For hexagon head screw
- 55mmL

6
PC.

Metal case size (mm) :
203 x 79 x 41 (0.023 cuft)



Contents

0.72 1 / 20

3055M H4, H5, H6, H8, H10, H12

3410MP

3/8"

- For hexagon head screw
- 55mmL

10
PC.

Metal case size (mm) :
270 x 73 x 46 (0.032 cuft)



Contents

1.05 1 / 20

3055M H4, H5, H6, H7, H8, H10, H12, H14, H16, H17

3419PP

3/8"

- For torx internal head
- 55mmL

9
PC.

Metal case size (mm) :
203 x 79 x 41 (0.023 cuft)



Contents

0.62 1 / 20

3053 T10, T15, T20, T25, T27, T30, T40, T45, T50

Standard Impact Socket

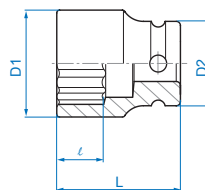
KT No. & D1



4530M

1/2"

- DIN 3129, ISO 2725-2

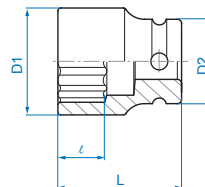


KT NO.	mm	D1 mm	D2 mm	l mm	L mm		
453008M	8	15.0	25	7	38	67	10 / 200
453009M	9	16.3	25	7	38	67	10 / 200
453010M	10	17.6	25	8	38	70	10 / 200
453011M	11	18.8	25	8	38	71	10 / 200
453012M	12	20.0	25	9	38	72	10 / 200
453013M	13	21.2	25	10	38	72	10 / 200
453014M	14	22.5	25	10	38	77	10 / 200
453015M	15	23.8	30	11	38	112	10 / 160
453016M	16	25.0	30	11	38	112	10 / 160
453017M	17	26.2	30	12	38	115	10 / 160
453018M	18	27.5	30	13	38	115	10 / 160
453019M	19	28.8	30	13	38	120	10 / 160
453020M	20	29.5	30	13	38	120	10 / 160
453021M	21	30.0	30	14	40	125	8 / 160
453022M	22	32.4	30	14	40	143	8 / 160
453023M	23	33.2	30	15	40	143	8 / 160
453024M	24	34.4	30	15	42	152	6 / 120
453025M	25	36.0	30	15	42	168	6 / 120
453026M	26	37.0	30	15	42	173	6 / 120
453027M	27	38.0	30	16	44	176	6 / 120
453028M	28	41.0	30	16	44	194	6 / 120
453029M	29	41.0	30	17	44	194	6 / 120
453030M	30	42.0	30.5	17	44	201	6 / 120
453032M	32	46.0	30	19	44	205	6 / 120
453033M	33	46.0	30	19	46	227	6 / 96
453034M	34	46.0	30	20	46	231	6 / 96
453036M	36	47.0	30	20	46	248	6 / 96
453038M	38	50.0	30	21	50	248	6 / 60
453041M	41	56.0	30	22	52	248	6 / 60

4530S

1/2"

- ANSI / ASME B107.2



KT NO.	inch	D1 mm	D2 mm	l mm	L mm		
453016S	1/2	20	25	10	38	71	10 / 200
453018S	9/16	22	25	10	38	77	10 / 200
453020S	5/8	24	25	11	38	111	10 / 200
453022S	11/16	26	30	12	38	116	10 / 160
453024S	3/4	28.8	30	13	38	119	10 / 160
453026S	13/16	30	30	14	40	125	8 / 160
453028S	7/8	32	30	14	40	141	8 / 160
453030S	15/16	34	30	15	42	152	6 / 120
453032S	1	36	30	15	42	168	6 / 120
453034S	1-1/16	38	30	16	44	176	6 / 120
453036S	1-1/8	41	30	17	44	194	6 / 120
453038S	1-3/16	42	30.5	17	44	209	6 / 120



Stubby Impact Socket

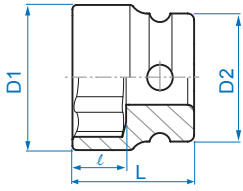


KT No. & D1

4525M

1/2"

- For impact wrench use
- DIN 3129, ISO 2725-2



19, 22, 24 mm

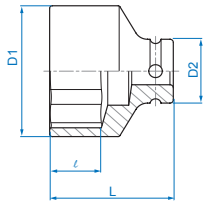
KT NO.	mm	D1 mm	D2 mm	l mm	L mm	kg	PC.
452513M	13	20	26	5.5	28.5	75	10 / 160
452514M	14	22	26	5.5	28.5	73	10 / 160
452517M	17	26	26	5.5	28.5	66	10 / 160
452519M	19	28	26	10	28.5	64	10 / 160
452521M	21	30	30	10	28.5	82	8 / 160
452522M	22	32	30	10	28.5	88	8 / 160
452524M	24	34	30	10	28.5	97	6 / 120

Standard Impact Socket

4535M

1/2"

- DIN 3129, ISO 2725-2



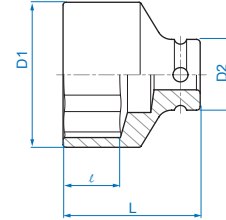
KT NO.	mm	D1 mm	D2 mm	l mm	L mm	kg	PC.
453508M	8	15.0	25	7	38	67	10 / 200
453509M	9	16.3	25	7	38	67	10 / 200
453510M	10	17.6	25	8	38	70	10 / 200
453511M	11	18.8	25	8	38	71	10 / 200
453512M	12	20.0	25	9	38	72	10 / 200
453513M	13	21.2	25	10	38	72	10 / 200
453514M	14	22.5	25	10	38	77	10 / 200
453515M	15	23.8	30	11	38	112	10 / 160
453516M	16	25.0	30	11	38	112	10 / 160
453517M	17	26.2	30	12	38	115	10 / 160
453518M	18	27.5	30	13	38	115	10 / 160
453519M	19	28.8	30	13	38	120	10 / 160
453520M	20	29.5	30	13	38	120	10 / 160
453521M	21	30.0	30	14	40	125	8 / 160
453522M	22	31.8	30	14	40	143	8 / 160
453523M	23	33.8	30	15	40	143	8 / 160
453524M	24	33.8	30	15	42	152	6 / 120
453525M	25	35.8	30	15	42	168	6 / 120
453526M	26	37.8	30	15	42	173	6 / 120
453527M	27	38.0	30	16	44	176	6 / 120
453528M	28	41.0	30	16	44	194	6 / 120
453529M	29	41.0	30	17	44	194	6 / 120
453530M	30	42.0	30.5	17	44	201	6 / 120
453532M	32	46.0	30	19	44	205	6 / 120
453533M	33	46.0	30	19	46	227	6 / 96
453534M	34	46.0	30	20	46	231	6 / 96
new 453535M	35	46.0	30	20	46	235	6 / 96
453536M	36	47.0	30	20	46	248	6 / 96
new 453537M	37	49.0	30	21	48	255	6 / 60

KT NO.	mm	D1 mm	D2 mm	l mm	L mm	kg	PC.
453538M	38	50.0	30	21	50	241	6 / 60
453539M	39	51.0	30	22	50	240	6 / 60
453541M	41	56.0	30	22	52	283	6 / 60
453546M	46	64.0	30	23	55	408	4 / 32

4535S

1/2"

- ANSI / ASME B107.2



KT NO.	inch	D1 mm	D2 mm	l mm	L mm	kg	PC.
453510S	5/16	15	25	7	38	67	10 / 200
453512S	3/8	17	25	7	38	70	10 / 200
453514S	7/16	18	25	8	38	71	10 / 200
453516S	1/2	20	25	10	38	72	10 / 200
453518S	9/16	22	25	10	38	77	10 / 200
453520S	5/8	24	25	11	38	112	10 / 160
453522S	11/16	26	30	12	38	115	10 / 160
453524S	3/4	28.8	30	13	38	120	10 / 160
453526S	13/16	30	30	14	40	125	8 / 160
453528S	7/8	32	30	14	40	143	8 / 160
453530S	15/16	34	30	15	42	152	6 / 120
453532S	1	36	30	15	42	168	6 / 120
453534S	1-1/16	38	30	16	44	176	6 / 120
453536S	1-1/8	41	30	17	44	194	6 / 120
453538S	1-3/16	42	30.5	17	44	201	6 / 120
453540S	1-1/4	46	30	18	44	205	6 / 120

Impact Socket Set

4472MP 158 PC.

4472SP 106 PC. 1/2"

- Standard impact socket

Stand size (mm) :
415 x 336 x 320



4472MP / 4472SP

KT NO.	Contents	Each Qty
4472MP	8, 9, 10, 11, 12, 13, 14	8
	15, 16, 17, 18, 19, 20, 21	6
	22, 23, 24	7
	25, 26, 27, 28	6
	29, 30, 32	5
4472SP	5/16, 3/8, 7/16, 1/2, 9/16	8
	5/8, 11/16, 3/4, 13/16	6
	7/8, 15/16,	7
	1, 1-1/16, 1-1/8	6
	1-3/16, 1-1/4	5

KT NO.	Spec.	kg	Cuft
4472MP-A	87103	6.37	0.67
4472MP-D	158 PC. socket content	19.63	0.54
4472SP-A	87103	6.37	0.67
4472SP-D	106 PC. socket content	20.4	0.37

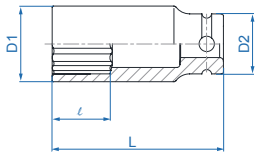
Deep Impact Socket

KT No. & D1

4430M

1/2"

• DIN 3121

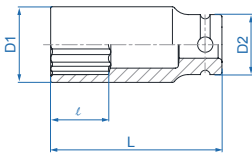


KT NO.	mm	D1 mm	D2 mm	l mm	L mm		
443008M	8	15.0	25	12	78	130	6 / 120
443009M	9	16.3	25	12	78	135	6 / 120
443010M	10	17.6	25	12	80	150	6 / 120
443011M	11	18.8	25	13	80	160	6 / 120
443012M	12	20.0	25	14	80	170	6 / 120
443013M	13	21.2	25	14	80	165	6 / 120
443014M	14	22.5	25	14	80	180	6 / 120
443015M	15	23.8	30	16	80	236	6 / 96
443016M	16	25.0	30	16	80	243	6 / 96
443017M	17	26.2	30	16	80	255	6 / 96
443018M	18	27.5	30	17	80	267	6 / 96
443019M	19	28.8	30	18	80	260	6 / 96
443020M	20	29.5	30	20	80	252	6 / 96
443021M	21	30.0	30	20	80	251	6 / 96
443022M	22	32.4	30	22	80	304	5 / 60
443023M	23	33.2	30	24	80	310	5 / 60
443024M	24	34.4	30	24	80	318	5 / 60
443027M	27	38.0	30	27	80	368	5 / 60
443030M	30	42.0	30.5	30	80	422	5 / 50
443032M	32	46.0	30	32	80	460	1 / 24
443036M	36	47.0	30	36	80	535	1 / 24

4430S

1/2"

• ANSI / ASME B107.2

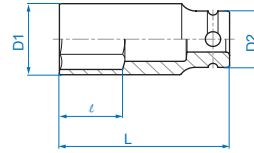


KT NO.	inch	D1 mm	D2 mm	l mm	L mm		
443020S	5/8	24	25	16	80	233	6 / 96
443024S	3/4	28.8	30	18	80	250	6 / 96
443028S	7/8	32	30	22	80	294	5 / 60
443030S	15/16	34	30	24	80	308	5 / 60
443032S	1	36	30	24	80	341	5 / 60
443034S	1-1/16	38	30	27	80	358	5 / 60
443036S	1-1/8	41	30	27	80	401	5 / 50
443040S	1-1/4	46	30	32	80	504	1 / 24
443042S	1-5/16	46	30	34	80	476	1 / 24
443048S	1-1/2	50	30	34	80	564	1 / 24

4435M

1/2"

• DIN 3121

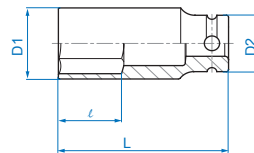


KT NO.	mm	D1 mm	D2 mm	l mm	L mm		
443508M	8	15.0	25	12	78	116	6 / 120
443509M	9	16.3	25	12	78	125	6 / 120
443510M	10	17.6	25	12	80	136	6 / 120
443511M	11	18.8	25	13	80	144	6 / 120
443512M	12	20.0	25	14	80	157	6 / 120
443513M	13	21.2	25	14	80	157	6 / 120
443514M	14	22.5	25	14	80	172	6 / 120
443515M	15	23.8	30	16	80	223	6 / 96
443516M	16	25.0	30	16	80	230	6 / 96
443517M	17	26.2	30	16	80	240	6 / 96
443518M	18	27.5	30	17	80	255	6 / 96
443519M	19	28.8	30	18	80	236	6 / 96
443520M	20	29.0	30	20	80	244	6 / 96
443521M	21	30.0	30	20	80	240	6 / 96
443522M	22	31.8	30	22	80	296	5 / 60
443523M	23	33.8	30	24	80	300	5 / 60
443524M	24	33.8	30	24	80	308	5 / 60
443525M	25	35.8	30	24	80	342	5 / 60
443526M	26	37.8	30	27	80	344	5 / 60
443527M	27	38.0	30	27	80	356	5 / 60
443528M	28	41.0	30	27	80	424	5 / 50
443529M	29	41.0	30	27	80	404	5 / 50
443530M	30	42.0	30.5	30	80	416	5 / 50
443532M	32	46.0	30	32	80	510	1 / 24
443533M	33	46.0	30	32	80	521	1 / 24
443534M	34	46.0	30	33	80	539	1 / 24
443536M	36	47.0	30	36	80	556	1 / 24
443538M	38	50.0	30	38	80	617	1 / 24
443541M	41	56.0	30	38	80	635	1 / 24
443546M	46	64.0	30	40	80	825	1 / 24

4435S

1/2"

• ANSI / ASME B107.2



KT NO.	inch	D1 mm	D2 mm	l mm	L mm		
443510S	5/16	14	25	12	78	123	6 / 120
443512S	3/8	17	25	12	80	148	6 / 120
443514S	7/16	18	25	13	80	148	6 / 120
443516S	1/2	20	25	14	80	159	6 / 120
443518S	9/16	22	25	14	80	170	6 / 120
443520S	5/8	24	25	16	80	232	6 / 96
443522S	11/16	26	30	17	80	235	6 / 96
443524S	3/4	28.8	30	18	80	251	6 / 96
443526S	13/16	30	30	20	80	243	6 / 96
443528S	7/8	32	30	22	80	292	5 / 60
443530S	15/16	34	30	24	80	308	5 / 60
443532S	1	36	30	24	80	336	5 / 60



KT NO.	inch	D1 mm	D2 mm	ℓ mm	L mm		
443534S	1-1/16	38	30	27	80	356	5 / 60
443536S	1-1/8	41	30	27	80	401	5 / 50
443538S	1-3/16	42	30.5	30	80	409	5 / 50
443540S	1-1/4	46	30	32	80	423	1 / 24
443542S	1-5/16	46	30	34	80	476	1 / 24

Impact Socket Set

4466MP 166 PC. **4466SP** 110 PC. 1/2"

- Deep impact socket

Stand size (mm) :
415 x 336 x 320



4466MP / 4466SP

KT NO.	Contents	Each Qty
4466MP	8, 9, 10, 11, 12, 13, 14	8
	15, 16, 17, 18, 19, 20	7
	21, 22, 23, 24	7
	25, 26, 27, 28, 29	6
	30, 32	5
4466SP	5/16, 3/8, 7/16,	8
	1/2, 9/16	8
	5/8, 11/16, 3/4,	7
	13/16, 7/8, 15/16	7
	1, 1-1/16, 1-1/8	6
	1-3/16, 1-1/4	5

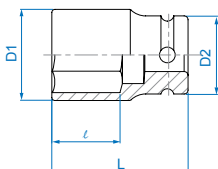
KT NO.	Spec.		Cuff
4466MP-A	87103	6.37	0.67
4466MP-DA	166 PC. socket content	22.06	0.38
4466MP-DB		24.10	0.45
4466SP-A	87103	6.37	0.67
4466SP-D	110 PC. socket content	28.0	0.47

Impact Thin Wall Socket

KT No. & D1

4835M 1/2"

- DIN 3121

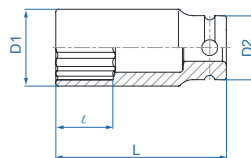


KT NO.	mm	D1 mm	D2 mm	ℓ mm	L mm		
483510M	10	16	25	20	52	92	10 / 180
483511M	11	17	25	20	52	92	10 / 180
483512M	12	18	25	20	52	92	10 / 180
483513M	13	19	25	20	52	95	10 / 180
483514M	14	21	25	20	52	101	10 / 180
483516M	16	23	25	20	52	149	8 / 80
483517M	17	25	25	23	52	152	8 / 80
483519M	19	27	30	23	52	148	8 / 80
483521M	21	29	30	25	52	152	8 / 80
483522M	22	31	30	25	52	164	8 / 80
483523M	23	32	30	26	52	172	8 / 80
483524M	24	33	30	26	52	174	8 / 80
483526M	26	36	30	27	65	241	6 / 60
483527M	27	37	30	27	65	248	6 / 60
483530M	30	41	30.5	27	65	296	5 / 50
new 483535M	35	46	30	32	70	380	1 / 24

4930M

1/2"

- DIN 3121

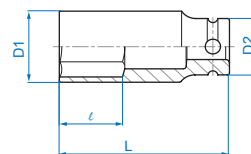


KT NO.	mm	D1 mm	D2 mm	ℓ mm	L mm		
493008M	8	13.2	25	20	78	130	6 / 120
493009M	9	14.0	25	20	78	135	6 / 120
493010M	10	15.5	25	20	80	150	6 / 120
493011M	11	16.7	25	20	80	160	6 / 120
493012M	12	18.0	25	20	80	170	6 / 120
493013M	13	19.0	25	20	80	165	6 / 120
493014M	14	20.5	25	20	80	180	6 / 120
493015M	15	21.5	30	20	80	236	6 / 96
493016M	16	23.0	30	20	80	243	6 / 96
493017M	17	24.5	30	23	80	255	6 / 96
493018M	18	25.5	30	23	80	267	6 / 96
493019M	19	27.0	30	23	80	260	6 / 96
493020M	20	28.0	30	23	80	252	6 / 96
493021M	21	29.0	30	25	80	251	6 / 96
493022M	22	30.5	30	25	80	304	5 / 60
493023M	23	32.0	30	26	80	310	5 / 60
493024M	24	33.0	30	26	80	318	5 / 60
493027M	27	37.0	30	27	80	368	5 / 60
493030M	30	40.5	30	27	80	422	5 / 50
493032M	32	42.5	30	27	80	460	5 / 50
493036M	36	45.5	30	32	80	535	1 / 24

4935M

1/2"

- DIN 3121



KT NO.	mm	D1 mm	D2 mm	ℓ mm	L mm		
493510M	10	15.5	25	20	80	132	6 / 120
493511M	11	16.7	25	20	80	151	6 / 120
493512M	12	18.0	25	20	80	148	6 / 120
493513M	13	19.0	25	20	80	148	6 / 120
493514M	14	20.5	25	20	80	156	6 / 120

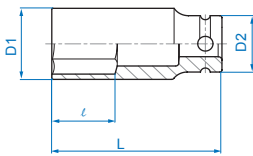
KT NO.	mm	D1 mm	D2 mm	ℓ mm	L mm		
493516M	16	23.0	30	20	80	213	6 / 96
493517M	17	24.5	30	23	80	230	6 / 96
493519M	19	27.0	30	23	80	238	6 / 96
493521M	21	29.0	30	25	80	234	6 / 96
493522M	22	30.5	30	25	80	294	5 / 60
493523M	23	32.0	30	26	80	300	5 / 60
493524M	24	33.0	30	26	80	285	5 / 60
493526M	26	35.5	30	27	80	341	5 / 60
493527M	27	37.0	30	27	80	358	5 / 60
493530M	30	40.5	30	27	80	413	5 / 50

Impact Thin Wall Socket

KT No. & D1

4935S 1/2"

- ANSI / ASME B107.2



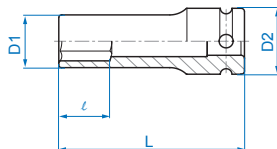
KT NO.	inch	D1 mm	D2 mm	ℓ mm	L mm		
493510S	5/16	13.0	25	20	80	129	6 / 120
493512S	3/8	16.0	25	20	80	145	6 / 120
493514S	7/16	16.7	25	20	80	148	6 / 120
493516S	1/2	19.0	25	20	80	159	6 / 120
493518S	9/16	20.5	25	20	80	165	6 / 120
493520S	5/8	23.0	25	20	80	170	6 / 96
493522S	11/16	24.5	30	23	80	235	6 / 96
493524S	3/4	27.0	30	23	80	255	6 / 96
493526S	13/16	29.0	30	25	80	292	6 / 96
493528S	7/8	30.5	30	25	80	308	5 / 60
493530S	15/16	33.0	30	26	80	336	5 / 60
493532S	1	34.0	30	26	80	356	5 / 60
493534S	1-1/16	37.0	30	27	80	405	5 / 60
493536S	1-1/8	39.0	30	27	80	414	5 / 50
493538S	1-3/16	40.5	30	27	80	417	5 / 50
493540S	1-1/4	42.5	30	27	80	422	5 / 50

Extra Thin Wall Impact Socket

- Finishing - phosphate sunk
- For aluminum alloy wheel
- Material - chrome molybdenum alloy steel
- Super thin wall version has less strength than standard deep one

4415M 1/2"

- DIN 3121 Thin walled design (D1)



KT NO.	mm	D1 mm	D2 mm	ℓ mm	L mm		
441517M	17	23.8	25	17	80	171	6 / 96
441519M	19	25.8	30	20	80	209	6 / 96
441521M	21	27.8	30	22	80	219	6 / 96
441522M	22	29.5	30	24	80	237	6 / 96

Wheel Nut Impact Socket

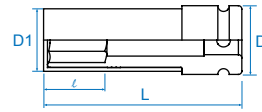


- Material - chrome molybdenum alloy steel
- Finishing - phosphate sunk
- Durable outer sleeve protects polished wheels and lug nut

KT No. & D1

4945MX 1/2"

- DIN 3121

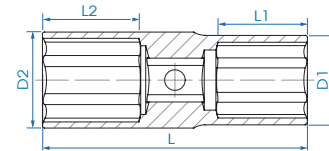


KT NO.	mm	D1 mm	D2 mm	ℓ mm	L mm		
494517MX	17	27.3	30	26	85	214	5 / 60
494519MX	19	29.3	30	26	85	229	5 / 60
494521MX	21	30.9	30	26	85	237	5 / 60

Double - Ended Impact Socket

4915M

4915S 1/2"

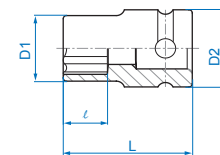


KT NO.	mm / inch	D1 mm	D2 mm	L mm	L1 mm	L2 mm		
49151719M	17 x 19	26	28	77	22	26	210	6 / 96
49151921M	19 x 21	26	28	77	23	26	200	6 / 96
49152122M	21 x 22	30	32	77	20	26	310	5 / 60
49152123M	21 x 23	30	32	77	22	26	310	5 / 60
49152426S	3/4" x 13/16"	26	28	77	23	26	200	6 / 96

Impact Star Socket

4575M 1/2"

- For torx external screw
- DIN 3121



KT NO.	Size	D1 mm	D2 mm	ℓ mm	L mm		
457510M	E10	14.0	25.0	7.5	38	67	10 / 200
457512M	E12	15.9	25.0	9.0	38	69	10 / 200
457514M	E14	17.7	25.0	10.0	38	71	10 / 200
457516M	E16	20.0	25.0	11.0	38	76	10 / 200
457518M	E18	22.0	25.0	12.5	38	79	10 / 200
457520M	E20	24.5	30.0	14.0	38	118	10 / 160

Impact Universal Joint Socket



KT No. & D1

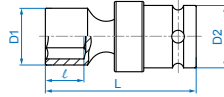
4B55M

- Special design for confined spaces
- DIN 3121



Standard Length

4B55S 1/2"



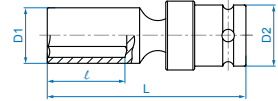
4A55M

- Special design for confined spaces
- DIN 3121



Deep Version

4A55S 1/2"



KT NO.	mm/inch	D1 mm	D2 mm	ℓ mm	L mm	⚖️	📦
4B5510M	10	17.0	27.5	12	64	161	10 / 120
4B5511M	11	19.0	27.5	12	64	166	10 / 120
4B5512M	12	19.0	27.5	12	64	162	10 / 120
4B5513M	13	21.8	27.5	12	64	176	10 / 120
4B5514M	14	22.0	27.5	12	64	174	10 / 120
4B5515M	15	22.0	27.5	12	64	172	10 / 120
4B5516M	16	23.9	27.5	12	64	180	10 / 120
4B5517M	17	25.0	27.5	12	64	173	10 / 120
4B5518M	18	25.8	27.5	12	64	173	10 / 120
4B5519M	19	27.9	27.5	12	64	187	10 / 120
4B5521M	21	30.0	27.5	12	64	190	10 / 120
4B5522M	22	31.7	27.5	12	64	196	10 / 120
4B5524M	24	35.8	27.5	12	64	217	6 / 96
4B5512S	3/8	17.0	27.5	12	64	161	10 / 120
4B5514S	7/16	19.0	27.5	12	64	166	10 / 120
4B5516S	1/2	21.8	27.5	12	64	176	10 / 120
4B5518S	9/16	22.0	27.5	12	64	174	10 / 120
4B5520S	5/8	23.9	27.5	12	64	180	10 / 120
4B5522S	11/16	25.0	27.5	12	64	173	10 / 120
4B5524S	3/4	27.9	27.5	12	64	187	10 / 120
4B5526S	13/16	30.0	27.5	12	64	190	10 / 120
4B5528S	7/8	31.7	27.5	12	64	196	10 / 120
4B5530S	15/16	35.8	27.5	12	64	217	6 / 96

KT NO.	mm/inch	D1 mm	D2 mm	ℓ mm	L mm	⚖️	📦
4A5510M	10	17.0	27.5	19	91	195	10 / 80
4A5511M	11	19.0	27.5	19	91	207	10 / 80
4A5512M	12	19.0	27.5	19	91	202	10 / 80
4A5513M	13	21.8	27.5	19	91	207	10 / 80
4A5514M	14	22.0	27.5	19	91	217	10 / 80
4A5515M	15	22.0	27.5	19	91	228	10 / 80
4A5516M	16	23.9	27.5	19	91	234	10 / 80
4A5517M	17	26.0	27.5	19	91	256	6 / 60
4A5518M	18	26.0	27.5	19	91	248	6 / 60
4A5519M	19	27.9	27.5	19	91	259	6 / 60
4A5521M	21	30.0	27.5	19	91	272	6 / 60
4A5522M	22	31.7	27.5	23.5	91	278	6 / 60
4A5524M	24	35.8	27.5	24	91	309	6 / 60
4A5512S	3/8	17.0	27.5	19	91	195	10 / 80
4A5514S	7/16	19.0	27.5	19	91	207	10 / 80
4A5516S	1/2	21.8	27.5	19	91	207	10 / 80
4A5518S	9/16	22.0	27.5	19	91	217	10 / 80
4A5520S	5/8	23.9	27.5	19	91	234	10 / 80
4A5522S	11/16	26.0	27.5	19	91	256	6 / 60
4A5524S	3/4	27.9	27.5	19	91	259	6 / 60
4A5526S	13/16	30.0	27.5	19	91	273	6 / 60
4A5528S	7/8	31.7	27.5	23.5	91	278	6 / 60
4A5530S	15/16	35.8	27.5	24	91	309	6 / 60

Impact Bit Socket



- Air pressure must not exceed 90PSI (6.3bar)
- Adjust your air tool to its lowest torque output, should this torque level not be enough, increase it gradually

4055S 1/2"

- Hexagon head
- ANSI / ASME B107.2



KT NO.	inch	L mm	Max. torq Nm	⚖️	📦
405506S	3/16	60	36.0	66	10 / 180
405508S	1/4	60	93.6	74	10 / 180
405510S	5/16	60	144.0	77	10 / 180
405512S	3/8	60	264.0	80	10 / 180
405514S	7/16	60	420.0	84	10 / 180
405516S	1/2	60	518.0	88	10 / 180

4055M 1/2"

- Hexagon head
- DIN 3121



KT NO.	mm	L mm	Max. torq Nm	⚖️	📦
405504M	H4	60	20.8	72	10 / 180
405505M	H5	60	36.0	73	10 / 180
405506M	H6	60	62.4	74	10 / 180
405507M	H7	60	97.0	76	10 / 180
405508M	H8	60	144.0	78	10 / 180
405510M	H10	60	264.0	86	10 / 180
405512M	H12	60	480.0	99	10 / 180
405513M	H13	60	518.0	105	10 / 180
405514M	H14	60	650.0	110	10 / 180
405516M	H16	60	680.0	127	10 / 180
405517M	H17	60	715.0	180	10 / 80
405518M	H18	60	740.0	179	10 / 80
405519M	H19	60	786.0	199	10 / 80

Impact Bit Socket



1. Air pressure must not exceed 90PSI (6.3bar)
2. Adjust your air tool to its lowest torque output, should this torque level not be enough, increase it gradually



KT No. & D1

4056M

1/2"

- Spline head
- DIN 3121



KT NO.	Size	L mm	Max. torq Nm	⚖️	📦
405608M	M 8	60	62.4	73	10 / 180
405610M	M10	60	144.0	81	10 / 180
405612M	M12	60	229.0	88	10 / 180

4053

4063

1/2"

- For torx internal screw
- DIN 3121



4053



4063

KT NO.	Size	L mm	⚖️	📦
405320	T20	60	58.0	10 / 180
405325	T25	60	73.0	10 / 180
405327	T27	60	73.5	10 / 180
405330	T30	60	74.0	10 / 180
405340	T40	60	85.0	10 / 180
405345	T45	60	90.0	10 / 180
405350	T50	60	95.0	10 / 180
405355	T55	60	100.0	10 / 180
405360	T60	60	105.0	10 / 180
405370	T70	60	105.0	10 / 180
406325	T25	100	97.0	6 / 120
406327	T27	100	97.5	6 / 120
406330	T30	100	98.0	6 / 120
406340	T40	100	110.0	6 / 120
406345	T45	100	130.0	6 / 120
406350	T50	100	150.0	6 / 120
406355	T55	100	160.0	6 / 120
406360	T60	100	170.0	6 / 120

4015S

1/2"

- Hexagon head
- DIN 3121



KT NO.	inch	L mm	Max. torq Nm	⚖️	📦
401508S	1/4	80	93.6	87	6 / 120
401510S	5/16	80	144.0	90	6 / 120
401512S	3/8	80	264.0	125	6 / 120
401516S	1/2	80	518.0	150	6 / 120

4015M

1/2"

- Hexagon head
- DIN 3121



KT NO.	mm	L mm	Max. torq Nm	⚖️	📦
401505M	H5	80	36.0	84	6 / 120
401506M	H6	80	62.4	86	6 / 120
401507M	H7	80	97.0	89	6 / 120
401508M	H8	80	144.0	96	6 / 120
401509M	H9	80	229.0	114	6 / 120
401510M	H10	80	264.0	136	6 / 120
401512M	H12	80	480.0	145	6 / 120
401513M	H13	80	518.0	155	6 / 120
401514M	H14	80	650.0	164	6 / 120
401517M	H17	80	715.0	248	6 / 96
401519M	H19	80	786.0	246	6 / 96

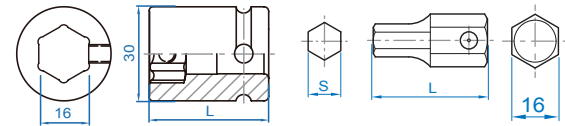
1740

1/2"

409616M

1/2"

- Hex bit & bit holder
- DIN 3121



KT NO.	S mm	L mm	Max. torq Nm	⚖️	📦
174010H	H10	40	264.0	46	20 / 400
174012H	H12	40	480.0	52	20 / 400
174014H	H14	40	684.0	60	20 / 200
174017H	H17	40	680.0	73	20 / 200
174019H	H19	40	680.0	80	20 / 200
174022H	H22	40	680.0	97	12 / 120
409616M	16	38	680.0	145	10 / 160

4065M

1/2"

- Hexagon head
- DIN 3121



KT NO.	mm	L mm	Max. torq Nm	⚖️	📦
406504M	H4	100	20.8	96	6 / 120
406505M	H5	100	36.0	97	6 / 120
406506M	H6	100	62.4	98	6 / 120
406508M	H8	100	144.0	110	6 / 120
406510M	H10	100	264.0	150	6 / 120
406512M	H12	100	480.0	170	6 / 120
406514M	H14	100	650.0	190	6 / 120



Impact Bit Socket



1. Air pressure must not exceed 90PSI (6.3bar)
2. Adjust your air tool to its lowest torque output, should this torque level not be enough, increase it gradually

KT No. & D1

4075M

1/2"

- Hexagon head
- DIN 3121



KT NO.	mm	L mm	Max. torq Nm		
407505M	H5	150	36.0	115	6 / 120
407506M	H6	150	62.4	125	6 / 120
407508M	H8	150	144.0	145	6 / 120
407510M	H10	150	264.0	185	6 / 120
407512M	H12	150	480.0	225	6 / 120
407514M	H14	150	650.0	250	6 / 120

Impact Accessory



KT No. & D1

4147

1/2"

- Bit holder
- DIN 3121



KT NO.	Size	Overall length mm		
414708S	1/4"	48	69	12 / 216
414710S	5/16"	48	70	12 / 216
414710M	10 mm	48	72	12 / 216

414A08S

1/2"

- Quick-release
- Bit holder
- DIN 3121



KT NO.	Size	Overall length mm		
414A08S	1/4"	51.2	93.6	10 / 180

Impact Accessory

4260

4260P

- Extension bar & with ball
- DIN 3121



4260



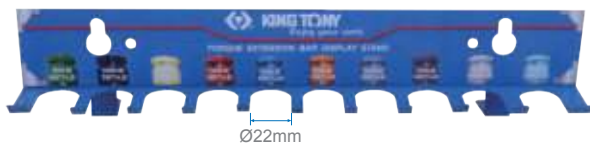
4260P

KT NO.	Overall length inch	Overall length mm		
4260-03	3	75	197	4 / 80
4260-04	4	100	255	4 / 80
4260-05	5	125	277	2 / 40
4260-06	6	150	340	4 / 80
4260-08	8	200	423	4 / 48
4260-10	10	250	452	4 / 48
4260-12	12	300	595	2 / 40
4260-16	16	400	746	2 / 20

KT NO.	Overall length inch	Overall length mm		
4260-03P	3	75	197	4 / 80
4260-04P	4	100	255	4 / 80
4260-05P	5	125	277	2 / 40
4260-06P	6	150	340	4 / 80
4260-08P	8	200	423	4 / 48
4260-10P	10	250	452	4 / 48
4260-12P	12	300	595	2 / 40
4260-16P	16	400	746	2 / 20

9TE41

- Hook for torque extension bar
- Groove capacity: 22 mm




Ø22mm

KT NO.	Overall length (mm)		
9TE41	311	196.4	1 / 24






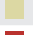







Example

Impact Accessory & Set

KT No. & D1  1/2"

4269

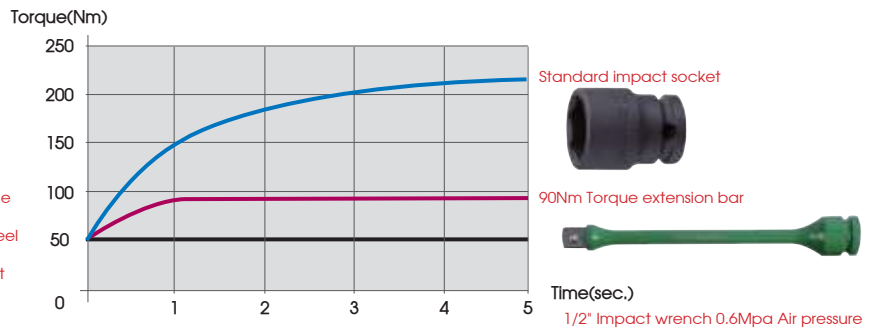
- Torque extension bar
- Color coded and engraved with Nm and ft.lb setting
- Helps to eliminate overtorqued lug nut

KT NO.	Color	Max. torq		Overall length		
		Nm	ft.lbs	inch	mm	
4269-08-90		90	65	7-11/16	195	192
4269-08-A0		100	75	7-11/16	195	201
4269-08-B0		110	80	7-11/16	195	217
4269-08-C0		120	90	7-11/16	195	224
4269-08-D5		135	100	7-11/16	195	238
4269-08-F0		150	110	7-11/16	195	263
4269-08-G0		160	120	7-11/16	195	304
4269-08-H5		175	130	7-11/16	195	284
4269-08-J0		190	140	7-11/16	195	331
4269-08-K0		200	150	7-11/16	195	344



How to use torque extension bar


1. Use with 1/2"DR. impact wrench, don't use by hand.
2. Set air pressure 0.6 MPa(90 PSI) and adjust torque value between 190 Nm and 210 Nm.
3. Select suitable torque extension bar according to wheel nut size and indicated tightening torque.
4. Attach the torque extension bar with socket to impact wrench and apply load.
5. Check the actual tightening torque value by torque wrench.
6. Adjust air pressure or torque value according to the result of above.
7. Tight other wheel nuts in diagonal order.



1/2" Impact wrench 0.6Mpa Air pressure

4481PP1

- Torque extension bar set

Contents	 2.58	 1 / 6
 4269-08-90	90 Nm	
 4269-08-A0	100 Nm	
 4269-08-B0	110 Nm	
 4269-08-C0	120 Nm	
 4269-08-D5	135 Nm	
 4269-08-F0	150 Nm	
 4269-08-G0	160 Nm	
 4269-08-H5	175 Nm	
 4269-08-J0	190 Nm	
 4269-08-K0	200 Nm	



10 PC.



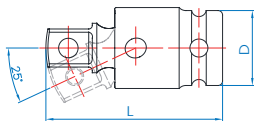
Impact Accessory



KT No. & D1

4796 4796P 1/2"

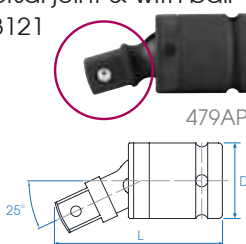
- Universal joint & with ball
- DIN 3121



KT NO.	Overall length		D mm	⚖️	📦
	inch	mm			
4796	2-3/8	59	25	121	6 / 96
4796P	2-3/8	59	25	121	6 / 96

479AP 4797 4797P 1/2"

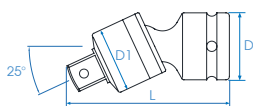
- Universal joint & with ball
- DIN 3121



KT NO.	Overall length		D mm	⚖️	📦
	inch	mm			
479AP	2-3/8	61	29.1	161	6 / 96
4797	2-1/2	65	29.1	172	6 / 96
4797P	2-1/2	65	29.1	172	6 / 96

4798 4798P 1/2"

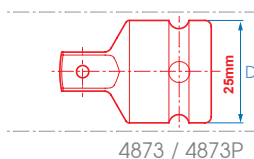
- Universal joint & with ball



KT NO.	Overall length		D mm	D1 mm	⚖️	📦
	inch	mm				
4798	3	74	29.1	29.1	222	6 / 96
4798P	3	74	29.1	29.1	222	6 / 96

4873 4873P 1/2"

- Adapter & with ball
- Convert to 3/8"
- 4873 → Max. torque:303 Nm
- DIN 3121

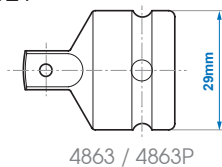


KT NO.	Spec.	D mm	⚖️	📦
4873	1/2"F x 3/8"M	25	80	10 / 160
4873P	1/2"F x 3/8"M	25	80	10 / 160

4863 4863P

4866 4866P 1/2"

- Adapter & with ball
- Convert to 3/8", 3/4" drive
- 4863 → Max. torque:303 Nm
- DIN 3121



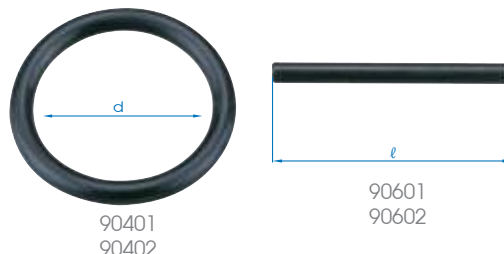
KT NO.	Spec.	⚖️	📦
4863	1/2"F x 3/8"M	95	10 / 160
4866	1/2"F x 3/4"M	174	8 / 160
4863P	1/2"F x 3/8"M	95	10 / 160
4866P	1/2"F x 3/4"M	174	8 / 160

90401 90402 1/2"

- Locking ring
- High tensile rubber material

90601 90602 1/2"

- Locking pin
- Chrome vanadium steel
- DIN 3129



KT NO.	Desp.	∅	d / l	Applied to socket sizes
90401	ring	3.5	19	4535M (8~14mm)
				4435M (8~14mm)
				4015M (5~14mm)
				4055M (4~14mm)
				4935M (10~14mm)
				4415M (17mm)
				4835M (10~17mm)
				4530M (8~14mm)
90601	pin	3.0	20	414A08S.4053.4063.4065.4075.4873.4015
				4147.4055.4056
				4535M (15~46mm)
				4435M (15~46mm)
				4935M (16~30mm)
				4015M (17.19mm)
				4415M (19.21mm)
				4530M (15~36mm)
				4575M (E20)
				4835M (19~30mm)
90402	ring	3.5	23	4535S (15/16"~9/16")
				4435S (15/16"~9/16")
90602	pin	3.0	25	4535S (11/16"~1-1/4")
				4435S (5/8"~1-1/4")
4260.4796.4797.4863.4873.4866				

Impact Socket Rail Set

4423MP

1/2"

▪ Thin wall version

3
PC.



Contents 0.45 48

4835M 17,19,21

7411PP

1/2"

11
PC.



Contents 0.76 4 / 32

3575M E5, E6, E7, E8

4575M E10, E12, E14, E16, E18, E20

4863 1/2"F x 3/8"M

Impact Socket Set

4408MP

1/2"

Metal case size (mm) :
270 x 73 x 46 (0.032 cuft)

8
PC.



Contents 1.3 1 / 20

4535M 10, 12, 13, 14, 17, 19, 21, 24

4408SP

1/2"

Metal case size (mm) :
270 x 73 x 46 (0.032 cuft)

8
PC.



Contents 1.3 1 / 20

4535S 3/8, 7/16, 1/2, 9/16, 11/16, 3/4, 13/16, 15/16

4412MP

1/2"

Metal case size (mm) :
224 x 94 x 40 (0.03 cuft)

11
PC.

Contents 1.61 1 / 8

4535M 10, 11, 12, 13, 14, 15, 16, 17, 18, 19, 21



4414MP

4414SP

1/2"

Metal case size (mm) :
270 x 100 x 49 (0.047 cuft)

14
PC.



4414MP



4414SP

KT NO.

Contents

4414MP	4535M	10, 11, 12, 13, 14, 15, 16, 17, 18, 19, 21, 22, 24, 27	2.25	1 / 8
4414SP	4535S	3/8, 7/16, 1/2, 9/16, 5/8, 11/16, 3/4, 13/16, 7/8, 15/16, 1, 1-1/16, 1-1/8, 1-1/4	2.4	



Impact Socket Set

4410MP

4410MP01

4410SP

1/2"

Metal case size (mm) :
246 x 103 x 38 (0.034 cuft)



4410MP / 4410MP01



4410SP

8 PC.

KT NO.

Contents

2.3

1 / 12

4410MP	4435M	12, 13, 14, 17, 19, 21, 22, 23
4410MP01	4435M	12, 13, 14, 17, 19, 21, 22, 24
4410SP	4435S	1/2, 9/16, 5/8, 11/16, 3/4, 13/16, 7/8, 15/16

4416SP

1/2"

Metal case size (mm) :
445 x 135 x 50 (0.021 cuft)



14 PC.

Contents

4.8 1 / 6

4435S	3/8, 7/16, 1/2, 9/16, 5/8, 11/16, 3/4, 13/16, 7/8, 15/16, 1, 1-1/16, 1-1/8, 1-1/4
-------	---

4413MP

1/2"

Metal case size (mm) :
270 x 73 x 46 (0.032 cuft)



8 PC.

Contents

1.37 1 / 20

4835M	10, 12, 13, 14, 17, 19, 21, 24
-------	--------------------------------

4415MP

4415MP03

1/2"

Metal case size (mm) :
445 x 135 x 50 (0.021 cuft)



4415MP



4415MP03

15 PC.

KT NO.

Contents

4.9

1 / 6

4415MP	4435M	10, 11, 12, 13, 14, 15, 16, 17, 18, 19, 21, 24, 26, 29, 32
4415MP03	4435M	10, 11, 12, 13, 14, 15, 16, 17, 19, 21, 22, 24, 27, 30, 32

4815MP04

new

4815MP05

new

1/2"

Metal case size (mm) :
445 x 135 x 50 (0.021 cuft)



4815MP04 / 4815MP05

15 PC.

KT NO.

Contents

4815MP04	4430M	10, 12, 13, 14, 15, 17, 18, 19, 20, 21, 22, 24, 27, 30, 32	5.1	1 / 6
4815MP05	4430M	8, 9, 10, 12, 13, 14, 15, 16, 17, 18, 19, 20, 21, 22, 24	4.3	1 / 6

Wheel Nut Impact Socket Set

4405MX

1/2"

- Thin wall impact socket set with plastic sleeve
- Durable outer sleeve protects polished wheels and lug nuts

Blow case size (mm) :
149 x 132 x 45 (0.031 cuft)



3
PC.

Contents		Kg	1/16
○	494517MX 17 mm	0.83	1 / 16
○	494519MX 19 mm		
○	494521MX 21 mm		

Impact Socket Set

4406MX

1/2"

- Wheel nut impact socket
- Torque extension bar

Metal case size (mm) :
296 x 130 x 41 (0.056 cuft)



6
PC.

Contents		Kg	1/10
○	494517MX 17 mm	2.13	1 / 10
○	494519MX 19 mm		
○	494521MX 21 mm		
	4269-08-90 90 Nm		
	4269-08-B0 110 Nm		
	4269-08-D5 135 Nm		

Impact Universal Joint Socket Set

4440MP

4440SP

1/2"

Metal case size (mm) :
318 x 147 x 46 (0.076 cuft)



10
PC.

KT NO.	Contents	Kg	1/5
4440MP	○ 4A55M	3.3	1 / 5
4440SP	○ 4A55S		

10, 11, 12, 13, 14, 17, 19, 21, 22, 24
3/8, 7/16, 1/2, 9/16, 5/8, 11/16, 3/4, 13/16, 7/8, 15/16

4450MP

4450SP

1/2"

Metal case size (mm) :
318 x 147 x 46 (0.076 cuft)



10
PC.

KT NO.	Contents	Kg	1/5
4450MP	○ 4B55M	2.6	1 / 5
4450SP	○ 4B55S		

10, 11, 12, 13, 14, 17, 19, 21, 22, 24
3/8, 7/16, 1/2, 9/16, 5/8, 11/16, 3/4, 13/16, 7/8, 15/16

Impact Bit Socket Set

4407MP

1/2"

Metal case size (mm) :
198 x 105 x 32 (0.023 cuft)

- For hex head screw
- 60mmL

7
PC.



Contents

0.94 kg / 1 / 20

4055M H4, H5, H6, H8, H10, H12, H14

4417PP

1/2"

Metal case size (mm) :
198 x 105 x 32 (0.023 cuft)

- For torx internal screw
- 60mmL

7
PC.



Contents

0.94 kg / 1 / 20

4053 T25, T30, T40, T45, T50, T55, T60

4457MP

1/2"

Metal case size (mm) :
244 x 118 x 37 (0.038 cuft)

- For hex head screw
- 100mmL

7
PC.



Contents

1.44 kg / 1 / 18

4065M H4, H5, H6, H8, H10, H12, H14

4467PP

1/2"

Metal case size (mm) :
244 x 118 x 37 (0.038 cuft)

- For torx internal screw
- 100mmL

7
PC.



Contents

1.31 kg / 1 / 18

4063 T25, T30, T40, T45, T50, T55, T60

4476MP

1/2"

Metal case size (mm) :
244 x 118 x 37 (0.038 cuft)

- For hex head screw
- 150mmL

6
PC.



Contents

1.47 kg / 1 / 18

4075M H5, H6, H8, H10, H12, H14

Standard Impact Socket

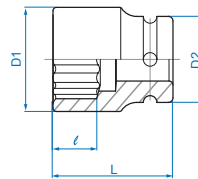
KT No. & D1



6510M

3/4"

- Lightweight type
- DIN 3121



4418MP

1/2"

Metal case size (mm) :
270 x 73 x 46 (0.032 cuft)

- For hex head screw
- 60mmL

8
PC.



Contents

1.34 kg / 1 / 20

4055M H5, H6, H8, H10, H12, H14, H17, H19

KT NO.	mm	D1 mm	D2 mm	l mm	L mm	kg	1 /	20
651017M	17	29.0	38	10	50	227	8 /	96
651018M	18	30.0	38	10	50	225	8 /	96
651019M	19	32.0	38	10	50	238	8 /	96
651021M	21	35.0	38	13	50	254	8 /	96
651022M	22	36.0	38	13	50	260	8 /	96
651023M	23	37.0	38	15	50	263	8 /	96
651024M	24	38.0	38	15	50	249	8 /	96
651026M	26	38.0	38	15	53	260	6 /	48
651027M	27	42.0	38	18	53	332	6 /	48
651028M	28	44.0	38	18	53	353	6 /	48
651029M	29	45.0	38	18	53	362	6 /	48
651030M	30	46.0	38	20	53	342	6 /	48

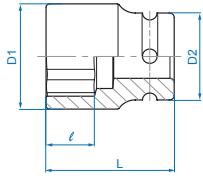
Standard Impact Socket



KT No. & D1



6515M

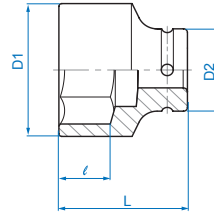
- Lightweight type
- DIN 3121







KT NO.	mm	D1 mm	D2 mm	l mm	L mm		
651514M	14	25.0	38	10	50	215	8 / 96
651515M	15	26.0	38	10	50	217	8 / 96
651516M	16	27.5	38	10	50	220	8 / 96
651517M	17	29.0	38	10	50	225	8 / 96
651518M	18	30.0	38	10	50	230	8 / 96
651519M	19	32.0	38	10	50	238	8 / 96
651521M	21	35.0	38	13	50	252	8 / 96
651522M	22	36.0	38	13	50	257	8 / 96
651523M	23	37.0	38	15	50	283	8 / 96
651524M	24	38.0	38	15	50	288	8 / 96
651525M	25	38.0	38	15	53	321	8 / 96
651526M	26	38.0	38	15	53	321	6 / 48
651527M	27	42.0	38	18	53	320	6 / 48
651528M	28	44.0	38	18	53	345	6 / 48
651529M	29	45.0	38	18	53	350	6 / 48
651530M	30	46.0	38	20	53	360	6 / 48

6535M

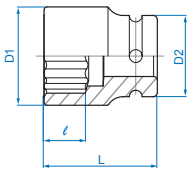
- DIN 3121





KT NO.	mm	D1 mm	D2 mm	l mm	L mm		
653513M	13	22.0	38	16	50	208	8 / 96
653517M	17	29.0	44	10	50	316	6 / 48
653518M	18	30.0	44	10	50	324	6 / 48
653519M	19	32.0	44	10	50	329	6 / 48
653521M	21	35.0	44	13	50	341	6 / 48
653522M	22	36.0	44	13	50	346	6 / 48
653523M	23	37.0	44	15	50	350	6 / 48
653524M	24	38.0	44	15	50	352	6 / 48
653526M	26	40.0	44	15	53	358	6 / 48
653527M	27	42.0	44	18	53	380	6 / 48
653528M	28	44.0	44	18	53	394	6 / 48
653529M	29	45.0	44	18	53	404	6 / 48
653530M	30	46.0	44	20	53	412	6 / 48
653531M	31	41.0	44	20	53	460	6 / 48
653532M	32	48.0	44	20	57	460	6 / 36
653533M	33	50.0	44	20	57	479	6 / 36
653534M	34	51.0	44	22	57	491	6 / 36
653535M	35	52.0	44	22	57	497	6 / 36
653536M	36	53.0	44	22	57	519	6 / 36
653538M	38	56.0	44	22	57	540	4 / 32
653540M	40	58.0	44	22	58	567	4 / 32
653541M	41	59.0	44	24	58	580	4 / 32
653542M	42	61.0	44	24	58	616	2 / 24
653543M	43	62.0	44	24	58	636	2 / 24
653544M	44	64.0	44	24	62	676	2 / 24
 653545M	45	64.0	44	24	62	700	2 / 24
653546M	46	66.0	44	24	62	717	2 / 24
653548M	48	68.0	44	26	65	925	2 / 24
653550M	50	71.0	44	26	65	955	1 / 20
653552M	52	74.0	54	30	68	1085	1 / 20
653554M	54	76.0	54	30	68	1125	1 / 20
653555M	55	77.0	54	30	70	1160	1 / 20
653557M	57	79.0	54	32	70	1198	1 / 20
653558M	58	81.0	54	32	70	1226	1 / 20
653560M	60	84.0	54	32	70	1313	1 / 20
653563M	63	83.5	54	40	80	1341	1 / 12
653565M	65	85.5	54	43	80	1358	1 / 12
 653570M	70	92.0	54	45	83	1580	1 / 12

6530M

- DIN 3129, ISO 2725-2



KT NO.	mm	D1 mm	D2 mm	l mm	L mm		
653017M	17	29.0	44	10	50	316	6 / 48
653019M	19	32.0	44	10	50	329	6 / 48
653021M	21	35.0	44	13	50	341	6 / 48
653022M	22	36.0	44	13	50	346	6 / 48
653023M	23	37.0	44	15	50	350	6 / 48
653024M	24	38.0	44	15	50	352	6 / 48
653026M	26	40.0	44	15	53	358	6 / 48
653027M	27	42.0	44	18	53	380	6 / 48
653028M	28	44.0	44	18	53	394	6 / 48
653029M	29	45.0	44	18	53	404	6 / 48
653030M	30	46.0	44	20	53	412	6 / 48
653032M	32	48.0	44	20	57	460	6 / 36
653033M	33	50.0	44	20	57	479	6 / 36
653034M	34	51.0	44	22	57	491	6 / 36
653035M	35	52.0	44	22	57	497	6 / 36
653036M	36	53.0	44	22	57	519	6 / 36
653038M	38	56.0	44	22	57	540	4 / 32
653040M	40	58.0	44	22	58	567	4 / 32
653041M	41	59.0	44	24	58	580	4 / 32
653042M	42	61.0	44	24	58	600	2 / 24
653046M	46	66.0	44	24	62	950	2 / 24
653063M	63	84.5	54	40	80	1343	1 / 12
653065M	65	86.5	54	43	80	1373	1 / 12
653070M	70	92.0	54	45	83	1451	1 / 12



Standard Impact Socket

KT No. & D1

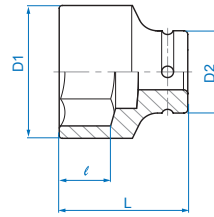


6535S

3/4"

• ANSI / ASME B107.2

KT NO.	Ø inch	D1 mm	D2 mm	ℓ mm	L mm		
653522S	11/16	29	38	10	50	225	8 / 96
653524S	3/4	32	38	10	50	238	8 / 96
653526S	13/16	35	38	13	50	252	8 / 96
653528S	7/8	36	38	13	50	257	8 / 96
653530S	15/16	37	38	15	50	288	8 / 96
653532S	1	38	38	15	53	320	8 / 96
653534S	1-1/16	42	40	18	53	325	6 / 48
653536S	1-1/8	44.7	40	18	53	355	6 / 48
653538S	1-3/16	46	40	20	53	365	6 / 48
653540S	1-1/4	48	44	20	57	460	6 / 36
653542S	1-5/16	50	44	20	57	479	6 / 36
653544S	1-3/8	52	44	22	57	497	6 / 36
653546S	1-7/16	54	44	22	57	529	6 / 36
653548S	1-1/2	56	44	22	57	540	4 / 32
653550S	1-9/16	58	44	22	58	567	4 / 32
653552S	1-5/8	59	44	24	58	580	4 / 32
653554S	1-11/16	63.5	44	25	58	636	2 / 24



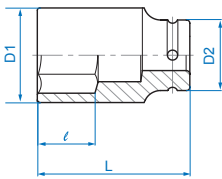
KT NO.	Ø inch	D1 mm	D2 mm	ℓ mm	L mm		
653556S	1-3/4	64	44	25	62	676	2 / 24
653558S	1-13/16	66	44	25.5	62	717	2 / 24
653560S	1-7/8	68	44	27	65	925	2 / 24
653562S	1-15/16	70	44	27	65	955	1 / 20
653564S	2	72	54	28	68	1035	1 / 20
653566S	2-1/16	74	54	30	68	1078	1 / 20
653568S	2-1/8	76	54	30	68	1122	1 / 20
653570S	2-3/16	77	54	30.5	70	1151	1 / 20
653572S	2-1/4	79	54	32.5	70	1208	1 / 20
653574S	2-5/16	81	54	32.5	70	1245	1 / 20
653576S	2-3/8	84	54	33.5	70	1349	1 / 20

Deep Impact Socket

6435M

3/4"

• DIN 3121

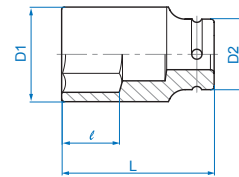


KT NO.	Ø mm	D1 mm	D2 mm	ℓ mm	L mm		
643519M	19	32	44	16	90	558	1 / 24
643521M	21	35	44	18	90	592	1 / 24
643522M	22	36	44	18	90	607	1 / 24
643523M	23	37	44	23	90	607	1 / 24
643524M	24	38	44	23	90	626	1 / 24
643525M	25	40	44	25	90	661	1 / 24
643526M	26	40	44	25	90	623	1 / 24
643527M	27	42	44	27	90	623	1 / 24
643528M	28	44	44	27	90	670	1 / 24
643529M	29	45	44	27	90	670	1 / 24
643530M	30	46	44	27	90	691	1 / 24
643532M	32	48	44	30	90	728	1 / 24
643533M	33	50	44	30	90	790	1 / 24
643534M	34	51	44	32	90	794	1 / 24
643535M	35	52	44	32	90	803	1 / 24
643536M	36	53	44	32	90	809	1 / 24
643538M	38	56	44	34	90	882	1 / 24
643540M	40	58	44	34	90	928	1 / 24
643541M	41	59	44	34	90	938	1 / 24
643542M	42	61	44	36	95	1074	1 / 24
643543M	43	62	44	38	95	1103	1 / 10
643544M	44	64	44	38	95	1180	1 / 10
643546M	46	66	44	38	95	1210	1 / 10
643548M	48	68	44	40	95	1391	1 / 10
643550M	50	71	44	40	95	1479	1 / 10
643555M	55	77	54	45	100	1810	1 / 10
643560M	60	84.5	54	50	100	2010	1 / 6
643565M	65	86.5	54	54	100	1990	1 / 6

6435S

3/4"

• ANSI / ASME B107.2



KT NO.	Ø inch	D1 mm	D2 mm	ℓ mm	L mm		
643524S	3/4	32	38	16	90	455	1 / 24
643526S	13/16	35	38	18	90	490	1 / 24
643528S	7/8	36	38	18	90	495	1 / 24
643530S	15/16	37	38	23	90	495	1 / 24
643532S	1	38	38	25	90	500	1 / 24
643534S	1-1/16	42	44	27	90	624	1 / 24
643536S	1-1/8	44.7	44	27	90	680	1 / 24
643538S	1-3/16	46	44	27	90	684	1 / 24
643540S	1-1/4	48	44	30	90	733	1 / 24
643542S	1-5/16	50	44	30	90	789	1 / 24
643544S	1-3/8	52	44	32	90	804	1 / 24
643546S	1-7/16	54	44	32	90	844	1 / 24
643548S	1-1/2	56	44	34	90	871	1 / 24
643550S	1-9/16	58	44	34	90	928	1 / 24
643552S	1-5/8	59	44	34	90	941	1 / 24
643554S	1-11/16	63.5	44	38	95	1111	1 / 10
643556S	1-3/4	64	44	38	95	1168	1 / 10
643558S	1-13/16	66	44	38	95	1241	1 / 10
643560S	1-7/8	68	54	40	95	1397	1 / 10
643562S	1-15/16	70	54	40	95	1448	1 / 10
643564S	2	72	54	40	95	1521	1 / 10

Thin Wall Impact Socket

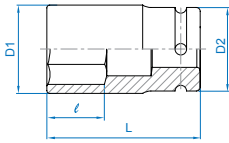
KT No. & D1



6835M

3/4"

- DIN 3121

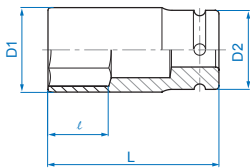


KT NO.	mm	D1 mm	D2 mm	l mm	L mm		
683517M	17	28.0	44	16	60	320	6 / 48
683519M	19	30.0	44	16	60	348	6 / 48
683521M	21	33.0	44	18	60	355	6 / 48
683522M	22	34.0	44	18	60	362	6 / 48
683523M	23	35.0	44	23	60	370	6 / 48
683524M	24	36.5	44	23	60	378	6 / 48
683526M	26	39.0	44	25	80	400	1 / 24
683527M	27	40.0	44	26	80	424	1 / 24
683529M	29	43.0	44	26	80	460	1 / 24
683530M	30	44.0	44	26	80	478	1 / 24
683532M	32	46.5	44	26	80	512	1 / 24

6935M

3/4"

- DIN 3121

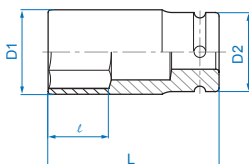


KT NO.	mm	D1 mm	D2 mm	l mm	L mm		
693519M	19	30.0	44	16	90	562	1 / 24
693521M	21	33.0	44	18	90	597	1 / 24
693522M	22	34.0	44	18	90	612	1 / 24
693523M	23	35.0	44	23	90	614	1 / 24
693524M	24	36.5	44	23	90	619	1 / 24
693526M	26	39.0	44	25	90	629	1 / 24
693527M	27	40.0	44	27	90	631	1 / 24
693529M	29	43.0	44	27	90	672	1 / 24
693530M	30	44.0	44	27	90	693	1 / 24
693532M	32	46.5	44	30	90	733	1 / 24

6935S

3/4"

- ANSI / ASME B107.2



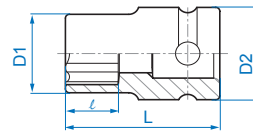
KT NO.	inch	D1 mm	D2 mm	l mm	L mm		
693524S	3/4	30.0	38	16	90	370	1 / 24
693526S	13/16	33.0	38	18	90	380	1 / 24
693528S	7/8	34.0	38	18	90	385	1 / 24
693530S	15/16	36.5	38	23	90	415	1 / 24
693532S	1	38.0	38	23	90	500	1 / 24
693534S	1-1/16	40.0	44	25	90	654	1 / 24
693536S	1-1/8	43.0	44	25	90	680	1 / 24
693538S	1-3/16	44.0	44	27	90	684	1 / 24
693540S	1-1/4	46.5	44	30	90	733	1 / 24

Impact Star Socket

6575M

3/4"

- For torx external screw
- DIN 3121



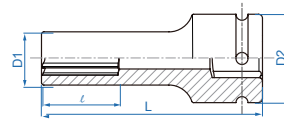
KT NO.	Size	D1 mm	D2 mm	l mm	L mm		
657524M	E24	32.5	44.0	17.0	50	382	6 / 48
657526M	E26	35.0	44.0	19.0	60	403	6 / 48
657528M	E28	36.5	44.0	25.5	60	414	6 / 48
657530M	E30	37.5	44.0	27.0	65	460	1 / 24
657532M	E32	39.5	44.0	29.0	65	470	1 / 24

Deep Impact Star Socket

6475M

3/4"

- For torx external screw
- DIN 3121
- For the operation of cylinder head bolts
- E18 on MAN commercial vehicles M 2000 and MAN busses with D 08 engines
- E20 on MAN commercial vehicles F 2000, F 90, F 8 and MAN busses with D 25 and D 28 engines
- E24 on MAN commercial vehicles Common Rail engines (D20)



KT NO.	Size	D1 mm	D2 mm	l mm	L mm		
647518M	E18	26.5	44.0	12.5	110	635	1 / 10
647520M	E20	29.0	44.0	14.0	110	680	1 / 10
647522M	E22	31.0	44.0	15.0	110	700	1 / 10
647524M	E24	32.5	44.0	17.0	110	736	1 / 10

Rear Wheel Socket

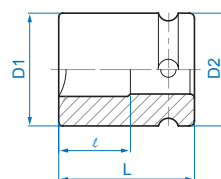
KT No. & D1



6514M

3/4"

- 4 points
- DIN 3121



KT NO.	Size	D1 mm	D2 mm	l mm	L mm		
651417M	17	39.8	34	28	53	350	1 / 24
651419M	19	39.8	34	28	53	332	1 / 24
651420M	20	41.8	36	28	53	377	1 / 24
651421M	21	41.8	36	28	53	370	1 / 24



Impact Bit Socket



KT No. & D1

6015M 3/4"

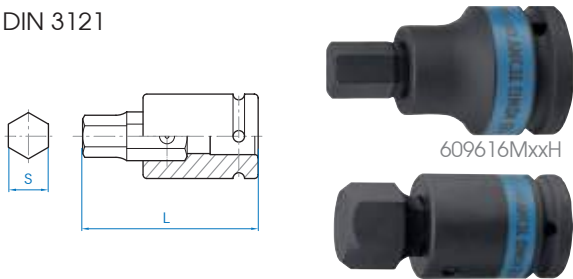
- Hexagon head
- DIN 3121



KT NO.	mm	L mm	Max. torq Nm		
601514M	H14	87	684	325	2 / 48
601517M	H17	87	1136	343	2 / 48
601519M	H19	87	1577	365	2 / 48
601521M	H21	87	2134	490	1 / 24
601522M	H22	87	2436	522	1 / 24
601524M	H24	87	3190	555	1 / 24
601527M	H27	87	4535	604	1 / 24

609616MxxH 3/4"

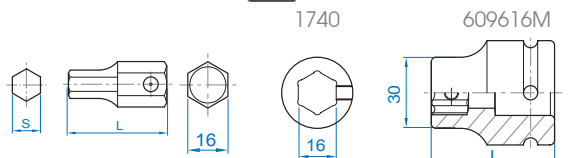
- DIN 3121



KT NO.	S mm	L mm	L (mm)	Max. torq Nm		
609616M10H	H10	16	77	264	416	4 / 40
609616M12H	H12	16	77	480	422	4 / 40
609616M14H	H14	16	77	684	430	4 / 40
609616M17H	H17	16	77	880	443	4 / 40
609616M19H	H19	16	77	880	450	4 / 40
609616M22H	H22	16	77	880	473	4 / 40
609622M19H	H19	22	93	1577	670	1 / 24
609622M22H	H22	22	93	2436	692	1 / 24
609622M24H	H24	22	93	2436	706	1 / 24
609622M27H	H27	22	93	2436	730	1 / 24
609622M30H	H30	22	93	2436	744	1 / 24
609622M32H	H32	22	93	2436	783	1 / 24

1740 3/4"

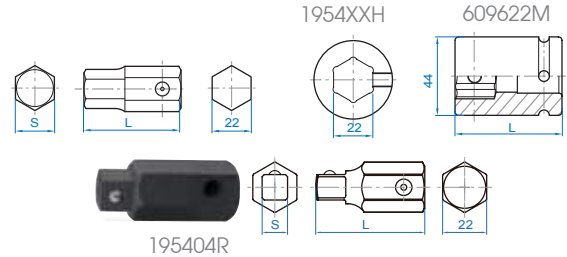
- Hex bit & bit holder
- DIN 3121



KT NO.	S mm	L mm	Max. torq Nm		
174010H	H10	40	264	46	20 / 400
174012H	H12	40	480	52	20 / 400
174014H	H14	40	684	60	20 / 200
174017H	H17	40	880	73	20 / 200
174019H	H19	40	880	80	20 / 200
174022H	H22	40	880	97	12 / 120
609616M	16	52	-	370	6 / 48

1954 3/4"

- Hex bit & bit holder
- DIN 3121

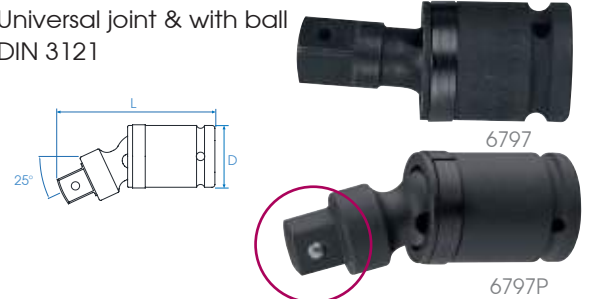


KT NO.	S mm	L mm	Max. torq Nm		
195419H	H19	54.5	1577	140	12 / 120
195422H	H22	54.5	2436	162	12 / 120
195424H	H24	54.5	2436	176	10 / 100
195427H	H27	54.5	2436	200	10 / 100
195430H	H30	54.5	2436	232	6 / 60
195432H	H32	54.5	2436	243	6 / 60
609622M	22	60.0	-	530	6 / 48
195404R	1/2"M	54.5	-	135	12 / 120

Impact Accessory

6797 3/4"

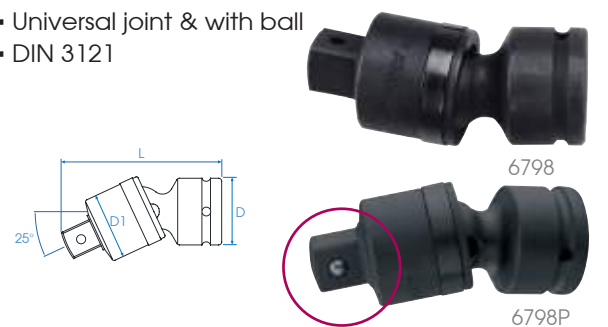
- Universal joint & with ball
- DIN 3121



KT NO.	Overall length inch	mm	D mm		
6797	4-1/2	114	44	742	2 / 20
6797P	4-1/2	114	44	742	2 / 20

6798 3/4"

- Universal joint & with ball
- DIN 3121



KT NO.	Overall length inch	mm	D (mm)	D1 (mm)		
6798	4-1/4	108	44	44	736	2 / 20
6798P	4-1/4	108	44	44	736	2 / 20

Impact Accessory



KT No. & DT

6260 6260P 3/4"

- Extension bar & with ball
- DIN 3121

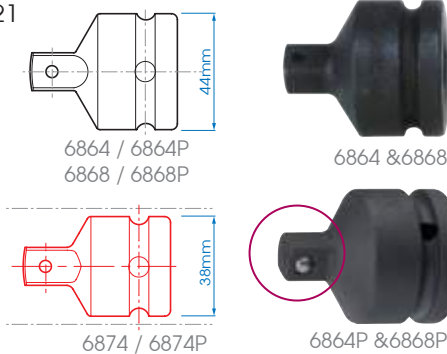


KT NO.	Overall length		Weight (g)	Pkg
	inch	mm		
6260-04	4	100	577	2 / 20
6260-07	7	175	867	2 / 20
6260-10	10	250	1155	1 / 16
6260-13	13	330	1423	1 / 10
6260-04P	4	100	577	2 / 20
6260-07P	7	175	867	2 / 20
6260-10P	10	250	1155	1 / 16
6260-13P	13	330	1423	1 / 10

6864 6864P

6868 6868P 3/4"

- Adapter & with ball
- Convert to 1/2" drive
- 6864 → Max. torque: 768 Nm
- DIN 3121



KT NO.	Spec.	Weight (g)	Pkg
6864	3/4"F x 1/2"M	313	6 / 48
6868	3/4"F x 1"M	413	6 / 48
6864P	3/4"F x 1/2"M	313	6 / 48
6868P	3/4"F x 1"M	413	6 / 48

6874 6874P 3/4"

- Adapter & with ball
- Convert to 1/2" drive
- 6874 → Max. torque: 768 Nm
- DIN 3121



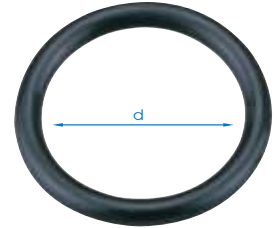
KT NO.	Spec.	D (mm)	Weight (g)	Pkg
6874	3/4"F x 1/2"M	38	255	6 / 48
6874P	3/4"F x 1/2"M	38	255	6 / 48

90403 90404 90405 3/4"

- Locking ring
- High tensile rubber material

90603 90604 90607 3/4"

- Locking pin
- Chrome vanadium steel
- DIN 3129



90603
90604
90607

90403
90404
90405

KT NO. Desp. ϕ d / l Applied to socket sizes

90403	ring	3.5	33	6015M (14~19mm) 6435S (3/4"~1") 6510M (17~30mm) 6535S (1-1/16"~1-3/16") 6515M (17~30mm) 6935S (3/4"~1") 6874
90607	pin	3.0	30	6535M (17~46mm) 6535S (1-1/4"~1-13/16") 6435M (19~46mm) 6435S (1-1/16"~1-13/16") 6935M (19~32mm) 6935S (1-1/16"~1-1/4") 6015M (21~27mm) 6260.6797.6798.6864
90404	ring	5.5	37	6530M (17~46mm) 6868 6835M (17~32mm) 609616M.609622M
90603	pin	4.0	35	6530M (17~46mm) 6868 6835M (17~32mm) 609616M.609622M
90405	ring	5.5	44	6535M (48~65mm) 6535S (1-7/8"~2-3/8") 6435M (48~50mm) 6435S (1-7/8"~2")
90604	pin	4.0	45	

Impact Bit Socket Set

6411MP 3/4"

Metal case size (mm) :
270 x 100 x 49 (0.048 cuft)

11
PC.



Contents		Weight (g)	Pkg
	6096M	16, 22	
	1740	H10, H12, H14, H17	
	1954	H19, H22, H24, H27, H32	

Impact Socket Set








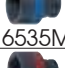

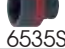
6408MP **6408MP10** **6408SP10** **3/4"**

Metal case size (mm) :
241 x 124 x 68 (0.07 cuft)



6408MP / 6408MP10 / 6408SP10

8
PC.

KT NO.		Contents		
6408MP	  6535M	19, 22, 24, 27, 30, 32, 36, 38	3.9	1 / 6
6408MP10	  6515M	19, 22, 24, 27, 30	3.9	
	  6535M	32, 36, 38		
6408SP10	  6535S	3/4, 7/8, 15/16, 1-1/16, 1-3/16, 1-1/4, 1-7/16, 1-1/2	3.8	

6409MP **6409MP03** **6409SP10** **3/4"**

Metal case size (mm) :
445 x 100 x 65 (0.10 cuft)






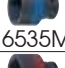

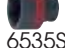


6409MP / 6409MP03



6409SP10

8
PC.

KT NO.		Contents		
6409MP	  6535M	26, 29, 30, 32, 34, 35, 36, 38	4.7	1 / 2
6409MP03	  6535M	21, 22, 24, 27, 30, 32, 36, 41	4.7	
6409SP10	  6535S	1, 1-1/16, 1-1/8, 1-1/4, 1-5/16, 1-3/8, 1-7/16, 1-1/2	4.8	

6410MP **6410SP** **3/4"**

Metal case size (mm) :
445 x 100 x 65 (0.10 cuft)






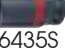


6410MP



6410SP

8
PC.

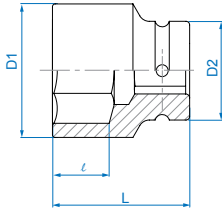
KT NO.		Contents	 7.1	 1 / 2
6410MP	  6435M	26, 29, 30, 32, 34, 35, 36, 38		
6410SP	  6435S	1, 1-1/16, 1-1/8, 1-1/4, 1-5/16, 1-3/8, 1-7/16, 1-1/2		

Standard Impact Socket

8535M



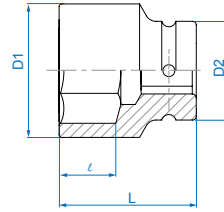
• DIN 3129, ISO 2725-2



8535S



• ANSI / ASME B107.2



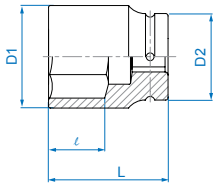
KT NO.	mm	D1 mm	D2 mm	l mm	L mm	g	kg
853519M	19	35	54	15	58	508	1 / 24
853521M	21	37	54	15	58	529	1 / 24
853522M	22	38	54	15	58	520	1 / 24
853523M	23	39	54	17	58	542	1 / 24
853524M	24	41	54	17	58	529	1 / 24
853525M	25	42	54	17	58	567	1 / 24
853526M	26	43	54	19	58	558	1 / 24
853527M	27	44	54	19	58	538	1 / 24
853528M	28	45	54	19	58	538	1 / 24
853529M	29	47	54	19	58	600	1 / 24
853530M	30	48	54	20	60	592	1 / 24
853532M	32	51	54	20	62	679	1 / 24
853533M	33	52	54	20	62	700	1 / 24
853534M	34	53	54	20	62	766	1 / 24
853535M	35	54	54	20	62	779	1 / 24
853536M	36	56	54	20	65	729	1 / 24
853537M	37	56	54	22	65	706	1 / 24
853538M	38	58	54	22	65	742	1 / 24
853540M	40	60	54	22	65	800	1 / 24
853541M	41	61	54	22	70	846	1 / 24
853542M	42	64	54	22	70	890	1 / 20
853544M	44	67	54	26	70	1000	1 / 20
853545M	45	67	54	26	70	953	1 / 20
853546M	46	68	54	26	75	1075	1 / 20
853548M	48	70	54	26	75	1085	1 / 20
853550M	50	73	54	26	75	1170	1 / 20
853552M	52	75	54	30	80	1300	1 / 12
853553M	53	76	54	30	80	1300	1 / 12
853554M	54	78	54	30	80	1400	1 / 12
853555M	55	79	54	32	83	1433	1 / 12
853558M	58	83	54	32	83	1542	1 / 12
853560M	60	86	54	32	87	1758	1 / 12
853563M	63	90	54	34	87	1750	1 / 12
853565M	65	92	54	34	90	1758	1 / 12
853566M	66	94	54	34	90	1966	1 / 12
853568M	68	95	54	34	90	1966	1 / 12
853570M	70	97	54	34	93	2112	1 / 8
853571M	71	99	86	36	93	2925	1 / 8
853575M	75	104	86	36	95	3188	1 / 8
853580M	80	110	86	43	95	3350	1 / 4
853585M	85	115	86	43	95	3250	1 / 4
853590M	90	122	86	43	100	3950	1 / 4
853595M	95	130	95	52	105	4290	1 / 2
8535A0M	100	136	95	51	105	4600	1 / 2

KT NO.	inch	D1 mm	D2 mm	l mm	L mm	g	kg
853524S	3/4	35	54	15	58	508	1 / 24
853526S	13/16	37	54	15	58	529	1 / 24
853528S	7/8	38	54	15	58	520	1 / 24
853530S	15/16	41	54	17	58	542	1 / 24
853532S	1	42	54	17	58	567	1 / 24
853534S	1-1/16	44	54	19	58	538	1 / 24
853536S	1-1/8	47	54	19	58	600	1 / 24
853538S	1-3/16	48	54	20	60	592	1 / 24
853540S	1-1/4	51	54	20	62	679	1 / 24
853542S	1-5/16	52	54	20	62	700	1 / 24
853544S	1-3/8	54	54	20	62	779	1 / 24
853546S	1-7/16	56	54	20	65	729	1 / 24
853548S	1-1/2	58	54	22	65	742	1 / 24
853550S	1-9/16	60	54	22	65	800	1 / 24
853552S	1-5/8	61	54	22	70	846	1 / 24
853554S	1-11/16	64	54	22	70	890	1 / 20
853556S	1-3/4	67	54	26	70	1000	1 / 20
853558S	1-13/16	68	54	26	75	1075	1 / 20
853560S	1-7/8	70	54	26	75	1085	1 / 20
853562S	1-15/16	72	54	26	75	1140	1 / 20
853564S	2	74	54	30	75	1235	1 / 20
853566S	2-1/16	75	54	30	80	1300	1 / 12
853568S	2-1/8	78	54	30	80	1400	1 / 12
853570S	2-3/16	79	54	32	83	1433	1 / 12
853572S	2-1/4	82	54	32	83	1500	1 / 12
853574S	2-5/16	83	54	32	83	1542	1 / 12
853576S	2-3/8	86	54	32	87	1758	1 / 12
853578S	2-7/16	88	54	34	87	1760	1 / 12
853580S	2-1/2	90	54	34	87	1750	1 / 12
853582S	2-9/16	92	54	34	90	1758	1 / 12
853584S	2-5/8	94	54	34	90	1966	1 / 12
853586S	2-11/16	95	54	34	90	1966	1 / 12
853588S	2-3/4	97	54	34	93	2112	1 / 8
853590S	2-13/16	99	86	36	93	2925	1 / 8
853592S	2-7/8	102	86	36	93	3050	1 / 8
853594S	2-15/16	104	86	36	95	3188	1 / 8
853596S	3	106	86	36	95	3205	1 / 8
8535A0S	3-1/8	110	86	43	95	3350	1 / 4
8535A4S	3-1/4	112	86	43	95	3300	1 / 4
8535A8S	3-3/8	117	86	43	100	3550	1 / 4
8535B2S	3-1/2	122	86	43	100	3950	1 / 4

Deep Impact Socket

8435M 1"

▪ DIN 3121

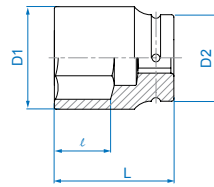


KT NO.	mm	D1 mm	D2 mm	l mm	L mm	g	kg
843524M	24	41	54	25	90	850	1 / 24
843527M	27	44	54	25	90	879	1 / 24
843528M	28	45	54	25	90	892	1 / 24
843530M	30	48	54	28	90	916	1 / 24
843532M	32	51	54	28	90	979	1 / 24
843533M	33	52	54	28	92	1016	1 / 24
843534M	34	53	54	28	92	1029	1 / 24
843535M	35	54	54	28	92	1016	1 / 24
843536M	36	56	54	32	92	1033	1 / 24
843538M	38	58	54	32	92	1025	1 / 24
843540M	40	60	54	32	92	1075	1 / 24
843541M	41	61	54	32	92	1083	1 / 24
843542M	42	64	54	32	92	1100	1 / 24
843546M	46	68	54	35	95	1137	1 / 10
843548M	48	70	54	35	95	1400	1 / 10
843550M	50	73	54	35	95	1518	1 / 10
843552M	52	75	54	40	100	1637	1 / 6
843554M	54	78	54	40	100	1750	1 / 6
843555M	55	79	54	40	100	1862	1 / 6
843558M	58	83	54	42	100	1925	1 / 6
843560M	60	86	54	42	100	2050	1 / 6
843565M	65	92	54	50	110	2663	1 / 6
843570M	70	97	54	59	110	2921	1 / 6

Deep Impact Socket

8435S 1"

▪ ANSI / ASME B107.1

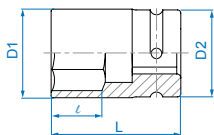


KT NO.	inch	D1 mm	D2 mm	l mm	L mm	g	kg
843530S	15/16	40.8	54	25	90	850	1 / 24
843532S	1	42	54	25	90	860	1 / 24
843534S	1-1/16	44	54	25	90	879	1 / 24
843536S	1-1/8	46.3	54	25	90	900	1 / 24
843538S	1-3/16	48	54	28	90	916	1 / 24
843540S	1-1/4	51	54	28	90	979	1 / 24
843542S	1-5/16	52	54	28	92	1016	1 / 24
843544S	1-3/8	54	54	28	92	1016	1 / 24
843546S	1-7/16	56	54	32	92	1033	1 / 24
843548S	1-1/2	58	54	32	92	1025	1 / 24
843550S	1-9/16	60	54	32	92	1075	1 / 24
843552S	1-5/8	61	54	32	92	1083	1 / 24
843554S	1-11/16	64	54	32	92	1100	1 / 24
843556S	1-3/4	67	54	32	92	1120	1 / 12
843558S	1-13/16	68	54	35	95	1137	1 / 12
843560S	1-7/8	70	54	35	95	1400	1 / 6
843562S	1-15/16	72	54	35	95	1480	1 / 6
843564S	2	74	54	35	95	1577	1 / 6
843566S	2-1/16	75	54	40	100	1637	1 / 6
843568S	2-1/8	78	54	40	100	1750	1 / 6
843570S	2-3/16	79	54	40	100	1862	1 / 6
843572S	2-1/4	82	54	42	100	1900	1 / 6

Thin Wall Impact Socket

8835M 1"

- Thin wall version
- 6 points
- Metric size
- DIN 3121

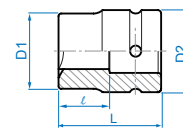


KT NO.	mm	D1 mm	D2 mm	l mm	L mm	g	kg
883524M	24	38.0	54	26	80	626	1 / 24
883527M	27	42.0	54	26	80	643	1 / 24
883529M	29	44.0	54	26	80	700	1 / 24
883530M	30	46.0	54	30	80	696	1 / 24
883532M	32	48.0	54	30	80	714	1 / 24
883533M	33	49.0	54	30	80	748	1 / 24
883534M	34	50.0	54	30	80	764	1 / 24
883535M	35	52.0	54	32	80	776	1 / 24
883536M	36	53.0	54	32	80	779	1 / 24
883538M	38	56.0	54	32	80	810	1 / 24
883541M	41	59.5	54	32	80	866	1 / 24

Rear Wheel Socket

8514M 8514S 8524M 1"

- 4 points
- DIN 3121



8524M



8514M



8524M



8514S

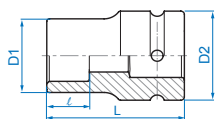
KT NO.	SQ	D1 mm	D2 mm	l mm	L mm	g	kg
851417M	17	40.0	54	30.0	60	618	1 / 24
851419M	19	42.0	54	30.0	60	618	1 / 24
851420M	20	43.0	54	30.0	60	621	1 / 24
851421M	21	44.0	54	30.0	60	621	1 / 24
851422M	22	45.5	54	30.0	60	621	1 / 24
852421M	21	44.0	48	30.0	60	621	1 / 24
851426S	13/16	44	54	30.0	60	625	1 / 24

Rear Wheel Socket

8534M

1"

- 4 points
- DIN 3121

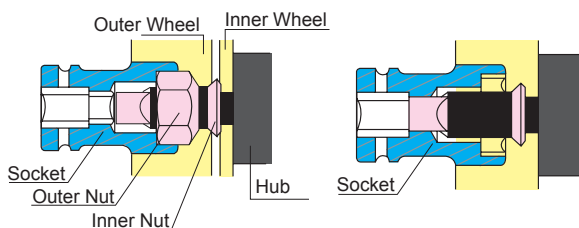
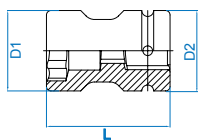


KT NO.	SQ	D1 mm	D2 mm	ℓ mm	L mm	⚖️	📦
853417M	17	38.0	54	23.5	76	628	1 / 24
853419M	19	43.0	54	23.5	76	682	1 / 24
853421M	21	47.0	54	23.5	76	733	1 / 24

8545M

1"

- DIN 3121
- 17SQ x35MM Isuzu, Mitsubishi, Nissan, Mazda
- 19SQ x41MM Mazda
- 20SQ x38MM Hino, Toyota, Daihatsu
- 20SQ x41MM Hino, Toyota, Daihatsu
- 21SQ x41MM Scania, Isuzu, Hino, Mitsubishi, Nissan



The wheel nut socket fits onto both outer nut and inner nut

KT NO.	SQ	mm	D1 mm	D2 mm	ℓ mm	L mm	⚖️	📦
85451735M	17 x 35		54	54	13	83	1042	1 / 24
85451941M	19 x 41		55	54	14	83	985	1 / 24
85452038M	20 x 38		58	54	14	87	1099	1 / 24
85452041M	20 x 41		58	54	14	87	1086	1 / 24
85452141M	21 x 41		58	54	14	87	1071	1 / 24

Impact Bit Socket

8015M

1"

- Hexagon head
- DIN 3121

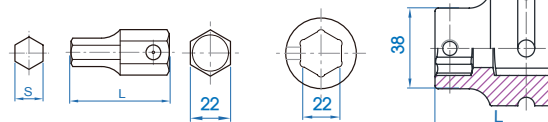


KT NO.	mm	L mm	⚖️	📦
801519M	H19	75	860	1 / 24

1954

809622M

- Hex bit & bit holder
- DIN 3121

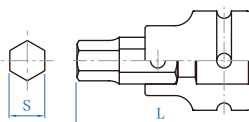


KT NO.	S mm	L mm	Max. torq Nm	⚖️	📦
195419H	H19	54.5	1577	140	12 / 120
195422H	H22	54.5	2436	162	12 / 120
195424H	H24	54.5	2436	176	10 / 100
195427H	H27	54.5	2436	200	10 / 100
195430H	H30	54.5	2436	232	6 / 60
195432H	H32	54.5	2436	243	6 / 60
809622M	22	58.0	-	756	1 / 24

809622MxxH

1"

- Hexagon head
- DIN 3121



KT NO.	S mm	mm	L (mm)	Max. torq Nm	⚖️	📦
809622M19H	H19	22	93	1577	896	1 / 10
809622M22H	H22	22	93	2436	918	1 / 10
809622M24H	H24	22	93	2436	932	1 / 10
809622M27H	H27	22	93	2436	956	1 / 10
809622M30H	H30	22	93	2436	988	1 / 10
809622M32H	H32	22	93	2436	999	1 / 10

Impact Accessory

8260

8260P

1"

- Extension bar & with ball
- DIN 3121



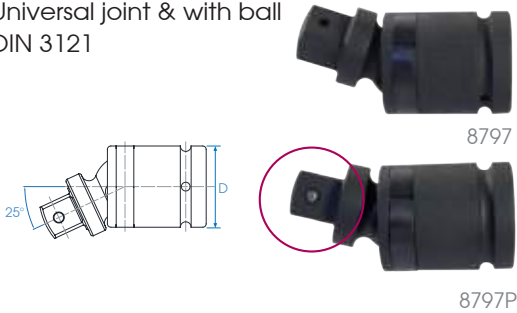
KT NO.	Overall Length		Kg	Box / Carton
	Inch	mm		
8260-07	7	175	1393	1 / 12
8260-10	10	250	1891	1 / 12
8260-13	13	330	2455	1 / 8
8260-07P	7	175	1393	1 / 12
8260-10P	10	250	1891	1 / 12
8260-13P	13	330	2455	1 / 8

8797

8797P

1"

- Universal joint & with ball
- DIN 3121



KT NO.	Overall Length		D mm	Kg	Box / Carton
	Inch	mm			
8797	5	125	60	1530	1 / 18
8797P	5	125	60	1530	1 / 18

8866

8866P

1"

- Adapter & with ball
- Convert to 3/4" drive
- Max. torque: 2118 Nm
- DIN 3121



KT NO.	Spec.	Kg	Box / Carton
8866	1" F x 3/4" M	562	4 / 32
8866P	1" F x 3/4" M	562	4 / 32

Impact Accessory

8869

8869P

1"

- Adapter & with ball
- Convert to 1-1/2" drive
- DIN 3121



KT NO.	Spec.	Kg	Box / Carton
8869	1" F x 1-1/2" M	963	1 / 24
8869P	1" F x 1-1/2" M	963	1 / 24

90405

90406

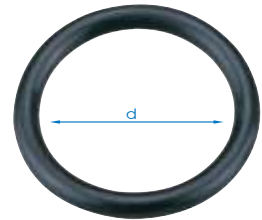
- Locking ring
- High tensile rubber material

90605

90606

1"

- Locking pin
- Chrome vanadium steel
- DIN 3129



90605
90606

90405
90406

KT NO.	Desp.	Ø	d / l	Applied to socket sizes
90405	ring	5.5	44	
90605	pin	5.0	45	8535M (19~70mm) 8535S (3/4"~2-3/4") 8435M (24~60mm) 8435S (15/16"~2-1/4") 8835M (24~60mm) 8514M, 8514S, 8534M, 806519M 8260, 8797, 8866, 8869
90406	ring	10	75	
90606	pin	5.0	75	8535M (71~90mm) 8535S (2-13/16"~3-1/2")

Impact Socket Set

8408MP

1"

- 6 PC. thin wall version
- 2 PC. rear wheel

Metal case size (mm) :
445 x 120 x 68 (0.128 cuft)

8
PC.



Contents	Kg	Box / Carton
8835M 24, 27, 32, 36, 38, 41	7.4	1 / 2
8534M 17, 21		

Impact Socket Set

8408MP02

1"

- 6 PC. thin wall deep version
 - 2 PC. rear wheel, square
- Metal case size (mm) :
445 x 120 x 68 (0.128 cuft)

8
PC.



Contents

6.9 1 / 2

		8835M	24, 27, 32, 36, 38, 41
		8534M	19, 21

8409MP

1"

Metal case size (mm) :
445 x 100 x 65 (0.104 cuft)

8
PC.



Contents

8.9 1 / 2

		8435M	24, 27, 30, 32, 33, 36, 38, 41
--	--	-------	--------------------------------

8410MP

8410SP

1"

Metal case size (mm) :
280 x 130 x 74 (0.095 cuft)

8
PC.



KT NO.

Contents

6.4 1 / 4

8410MP		8535M	24, 27, 30, 32, 33, 36, 38, 41
8410SP		8535S	15/16, 1-1/16, 1-3/16, 1-1/4, 1-5/16, 1-7/16, 1-1/2, 1-5/8

Impact Accessory

9260

9260P

1-1/2"

- Extension bar & with ball
- DIN 3121



9260



9260P

KT NO.

Overall length
Inch mm



9260-13	13	330	5900	1 / 4
9260-13P	13	330	5900	1 / 4

9868

9868P

1-1/2"

- Adapter & with ball
- Convert to 1" drive
- Max. → torque:2515 Nm
- DIN 3121



9868



9868P

KT NO.

Spec.



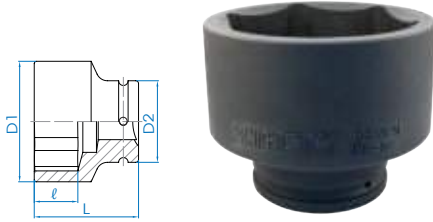
9868	1-1/2" F x 1"M	2360	1 / 6
9868P	1-1/2" F x 1"M	2360	1 / 6

Standard Impact Socket

- Material - chrome molybdenum alloy steel
- Finishing - phosphate sunk

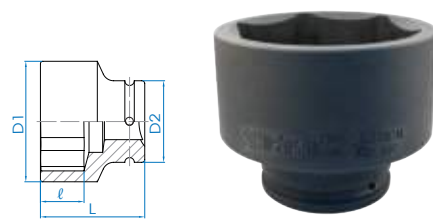
9535M 1-1/2"

• DIN 3129



9535S 1-1/2"

• ANSI / ASME B107.1



KT NO.	mm	D1 mm	D2 mm	l mm	L mm	g	kg
953532M	32	56	86	23	80	1945	1/6
953533M	33	57	86	23	80	1935	1/6
953534M	34	58	86	24	80	1947	1/6
953536M	36	62	86	26	80	1905	1/6
953538M	38	64	86	26	80	2002	1/6
953541M	41	68	86	28	80	2125	1/6
953542M	42	70	86	28	80	2295	1/6
953546M	46	73	86	30	85	2233	1/6
953550M	50	78	86	32	85	2300	1/6
953555M	55	85	86	36	93	2660	1/6
953560M	60	90	86	40	95	2840	1/6
953565M	65	96	86	42	100	3150	1/6
953570M	70	103	86	46	103	3460	1/6
953575M	75	108	86	48	105	3700	1/4
953580M	80	115	86	52	105	3900	1/4
953585M	85	121	86	55	110	4175	1/4
953590M	90	127	86	58	110	4600	1/4
953595M	95	134	127	50	110	7570	1/1
9535A0M	100	140	127	53	115	8104	1/1
9535A5M	105	146	127	53	115	8340	1/1
9535B0M	110	152	127	56	125	9400	1/1
9535B5M	115	160	127	60	125	9766	1/1
9535C0M	120	166	127	62	130	10460	1/1
9535C5M	125	172	127	65	135	11148	1/1
9535D0M	130	180	127	68	140	12423	1/1
9535D5M	135	185	127	70	145	13090	1/1
9535E0M	140	190	127	75	150	13570	1/1
9535F0M	150	200	127	80	155	14270	1/1

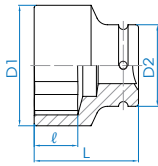
KT NO.	inch	D1 mm	D2 mm	l mm	L mm	g	kg
953564S	2	81	86	35	85	2400	1/6
953566S	2-1/16	82	86	36	85	3075	1/6
953568S	2-1/8	84	86	36	90	3214	1/6
953570S	2-3/16	85	86	43	93	3204	1/6
953572S	2-1/4	87	86	43	93	3205	1/6
953574S	2-5/16	89	86	43	93	3263	1/6
953576S	2-3/8	90	86	45	95	2950	1/6
953578S	2-7/16	93	86	44	95	3426	1/6
953580S	2-1/2	95	86	46	97	3547	1/6
953582S	2-9/16	96	86	49	100	3617	1/6
953584S	2-5/8	99	86	48	100	3780	1/6
953586S	2-11/16	101	86	48	100	3842	1/6
953588S	2-3/4	103	86	48	103	4080	1/6
953590S	2-13/16	105	86	50	105	4192	1/6
953592S	2-7/8	107	86	50	105	3600	1/6
953594S	2-15/16	108	86	50	105	3700	1/6
953596S	3	111	86	50	105	4465	1/4
953598S	3-1/16	114	86	52	105	4577	1/4
9535A0S	3-1/8	116	86	53	105	4689	1/4
9535A2S	3-3/16	118	86	53	105	4746	1/4
9535A4S	3-1/4	120	86	54	105	4829	1/4
9535A6S	3-5/16	122	86	56	105	4879	1/4
9535A8S	3-3/8	123	86	56	105	4870	1/4
9535B0S	3-7/16	125	86	57	105	4954	1/4
9535B2S	3-1/2	129	86	60	110	5442	1/4
9535B4S	3-9/16	130	86	60	110	5435	1/4
9535B6S	3-5/8	131	86	60	110	5435	1/4
9535B8S	3-11/16	133	86	62	113	5468	1/1
9535C0S	3-3/4	136	127	62	113	8147	1/1
9535C2S	3-13/16	138	127	64	120	9098	1/1
9535C4S	3-7/8	139	127	66	120	8954	1/1
9535C6S	3-15/16	140	127	66	120	8931	1/1
9535C8S	4	142	127	66	120	8104	1/1
9535D0S	4-1/16	143	127	68	120	8914	1/1
9535D2S	4-1/8	146	127	68	120	8340	1/1
9535D4S	4-3/16	146	127	70	120	8917	1/1
9535D6S	4-1/4	150	127	72	124	9400	1/1
9535D8S	4-5/16	154	127	72	124	10026	1/1
9535E0S	4-3/8	155	127	72	124	9999	1/1
9535E2S	4-7/16	155	127	75	128	10112	1/1
9535E4S	4-1/2	159	127	75	128	9766	1/1
9535E8S	4-5/8	164	127	79	132	13730	1/1
9535F2S	4-3/4	167	127	79	132	11148	1/1
9535F6S	4-7/8	171	127	79	136	12423	1/1
9535G0S	5	174	127	79	140	13090	1/1
9535G4S	5-1/8	180	127	80	143	13896	1/1
9535G8S	5-1/4	184	127	80	145	13570	1/1
9535J2S	6	203	127	85	165	14270	1/1



Standard Impact Socket

- Material - chrome molybdenum alloy steel
- Finishing - phosphate sunk

A535M 2-1/2"

▪ DIN 3129

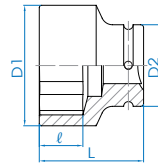




KT NO.	mm	D1 mm	D2 mm	l mm	L mm		
A535041M	41	78	127	39	115	5985	1 / 4
A535046M	46	83	127	39	115	5971	1 / 4
A535050M	50	88	127	39	115	6050	1 / 4
A535051M	51	89	127	39	115	6064	1 / 4
A535055M	55	94	127	42	115	6148	1 / 4
A535057M	57	96	127	42	115	6180	1 / 4
A535060M	60	100	127	45	125	6878	1 / 2
A535065M	65	105	127	48	125	6901	1 / 2
A535070M	70	110	127	50	125	6933	1 / 2
A535075M	75	115	127	55	125	7148	1 / 2
A535076M	76	120	127	55	125	7143	1 / 2
A535077M	77	120	127	55	125	7156	1 / 2
A535080M	80	123	127	57	125	7229	1 / 2
A535085M	85	127	127	60	130	7549	1 / 2
A535086M	86	127	127	60	130	7470	1 / 2
A535090M	90	135	127	65	130	7906	1 / 2
A535095M	95	140	127	70	140	8564	1 / 2
A535100M	100	145	127	70	140	9084	1 / 2
A535105M	105	155	127	70	142	10189	1 / 2
A535110M	110	160	127	76	155	11511	1 / 2
A535115M	115	165	127	78	155	18390	1 / 2
A535120M	120	175	127	80	160	18991	1 / 1
A535125M	125	180	127	82	165	19874	1 / 1
A535130M	130	185	127	85	170	20649	1 / 1
A535135M	135	190	127	90	175	21751	1 / 1
A535140M	140	200	127	95	180	24066	1 / 1
A535145M	145	205	127	95	183	24961	1 / 1
A535150M	150	210	127	100	190	26918	1 / 1
A535155M	155	215	175	100	195	27998	1 / 1
A535160M	160	225	175	100	200	31132	1 / 1
A535165M	165	230	175	105	205	32455	1 / 1
A535170M	170	235	175	105	205	33150	1 / 1
A535175M	175	240	175	110	210	34520	1 / 1
A535180M	180	250	175	110	213	38239	1 / 1
A535185M	185	255	175	110	213	39849	1 / 1
A535190M	190	265	175	115	220	41491	1 / 1
A535200M	200	275	175	120	225	44442	1 / 1
A535210M	210	285	175	125	235	48784	1 / 1
A535215M	215	290	175	125	240	51218	1 / 1
A535225M	225	305	175	135	250	57571	1 / 1
A535235M	235	315	175	140	260	62922	1 / 1

(Make - to - order production)

A535S 2-1/2"

▪ ANSI / ASME B107.1



KT NO.	inch	D1 mm	D2 mm	l mm	L mm		
A535076S	2-3/8	100	127	45	125	6892	1 / 2
A535078S	2-7/16	103	127	45	125	6937	1 / 2
A535080S	2-1/2	103	127	48	125	6855	1 / 2
A535082S	2-9/16	105	127	48	125	6901	1 / 2
A535084S	2-5/8	107	127	50	125	6944	1 / 2
A535088S	2-3/4	110	127	50	125	6935	1 / 2
A535090S	2-13/16	115	127	50	125	7046	1 / 2
A535094S	2-15/16	115	127	55	125	7165	1 / 2
A535096S	3	120	127	55	125	7203	1 / 2
A535100S	3-1/8	123	127	57	125	7262	1 / 2
A535108S	3-3/8	127	127	60	130	7486	1 / 2
A535112S	3-1/2	135	127	65	130	7988	1 / 2
A535120S	3-3/4	140	127	70	140	8561	1 / 2
A535124S	3-7/8	145	127	70	140	8651	1 / 2
A535126S	3-15/16	145	127	70	140	8767	1 / 2
A535132S	4-1/8	155	127	70	142	9910	1 / 2
A535136S	4-1/4	160	127	75	155	11749	1 / 2
A535138S	4-5/16	160	127	75	155	12526	1 / 2
A535144S	4-1/2	165	127	78	155	12614	1 / 2
A535148S	4-5/8	175	127	80	160	19181	1 / 1
A535156S	4-7/8	180	127	82	165	19876	1 / 1
A535160S	5	185	127	82	165	20029	1 / 1
A535164S	5-1/8	185	127	85	170	20425	1 / 1
A535168S	5-1/4	190	127	90	175	21817	1 / 1
A535172S	5-3/8	200	127	95	180	23903	1 / 1
A535180S	5-5/8	205	127	95	183	24439	1 / 1
A535184S	5-3/4	205	127	95	183	26303	1 / 1
A535188S	5-7/8	210	127	100	190	26627	1 / 1
A535192S	6	215	175	100	195	29105	1 / 1
A535196S	6-1/8	220	175	100	195	28695	1 / 1
A535200S	6-1/4	220	175	100	195	28581	1 / 1
A535204S	6-3/8	225	175	100	200	30775	1 / 1
A535208S	6-1/2	230	175	105	205	31057	1 / 1
A535212S	6-5/8	235	175	105	205	32173	1 / 1
A535216S	6-3/4	235	175	105	205	33688	1 / 1
A535220S	6-7/8	240	175	110	210	32414	1 / 1
A535224S	7	245	175	110	210	35530	1 / 1
A535240S	7-1/2	265	175	115	220	41160	1 / 1
A535244S	7-5/8	265	175	115	220	41527	1 / 1
A535252S	7-7/8	275	175	120	225	44463	1 / 1
A535256S	8	280	175	120	230	45898	1 / 1

(Make - to - order production)

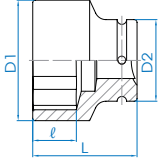


Standard Impact Socket

- Material - chrome molybdenum alloy steel
- Finishing - phosphate sunk

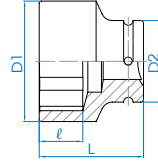
B535M 3-1/2"

• DIN 3129



B535S 3-1/2"

• ANSI / ASME B107.1



KT NO.	mm	D1 mm	D2 mm	l mm	L mm		
B535105M	105	165	175	70	175	18736	1 / 1
B535110M	110	170	175	75	175	19192	1 / 1
B535115M	115	175	175	78	180	19740	1 / 1
B535120M	120	180	175	80	185	20249	1 / 1
B535125M	125	185	175	82	185	21866	1 / 1
B535130M	130	190	175	85	194	22709	1 / 1
B535135M	135	200	175	90	200	24242	1 / 1
B535140M	140	205	175	95	205	25594	1 / 1
B535145M	145	210	175	95	210	31125	1 / 1
B535150M	150	215	175	100	210	32386	1 / 1
B535160M	160	230	175	100	220	35851	1 / 1
B535165M	165	235	175	105	224	37929	1 / 1
B535170M	170	240	175	105	225	38715	1 / 1
B535175M	175	245	175	110	230	40057	1 / 1
B535180M	180	255	200	110	230	43773	1 / 1
B535185M	185	260	200	110	235	46944	1 / 1
B535190M	190	270	200	115	240	50602	1 / 1
B535200M	200	280	200	120	245	52902	1 / 1
B535210M	210	290	200	125	250	57508	1 / 1
B535215M	215	300	200	125	250	60066	1 / 1
B535225M	225	310	200	135	265	61504	1 / 1
B535235M	235	315	200	140	267	67914	1 / 1

(Make - to - order production)

KT NO.	inch	D1 mm	D2 mm	l mm	L mm		
B535132S	4-1/8	165	175	70	175	18749	1 / 1
B535136S	4-1/4	168	175	75	175	19087	1 / 1
B535140S	4-3/8	170	175	75	175	19742	1 / 1
B535144S	4-1/2	175	175	78	180	19725	1 / 1
B535148S	4-5/8	175	175	80	180	19957	1 / 1
B535152S	4-3/4	180	175	80	185	20142	1 / 1
B535156S	4-7/8	185	175	82	185	22040	1 / 1
B535160S	5	190	175	82	194	21593	1 / 1
B535164S	5-1/8	190	175	85	194	22640	1 / 1
B535168S	5-1/4	200	175	90	200	23594	1 / 1
B535172S	5-3/8	200	175	95	200	24645	1 / 1
B535176S	5-1/2	205	175	95	205	25572	1 / 1
B535180S	5-5/8	205	175	95	205	30530	1 / 1
B535184S	5-3/4	210	175	95	210	31925	1 / 1
B535188S	5-7/8	215	175	100	210	32509	1 / 1
B535192S	6	220	175	100	215	33432	1 / 1
B535196S	6-1/8	220	175	100	215	34281	1 / 1
B535200S	6-1/4	230	175	100	220	35136	1 / 1
B535204S	6-3/8	230	175	100	220	36511	1 / 1
B535208S	6-1/2	235	175	105	224	37769	1 / 1
B535212S	6-5/8	235	175	105	224	37989	1 / 1
B535216S	6-3/4	240	175	105	225	38706	1 / 1
B535220S	6-7/8	245	175	110	230	39875	1 / 1
B535224S	7	250	200	110	230	41995	1 / 1
B535228S	7-1/8	255	200	110	230	44245	1 / 1
B535232S	7-1/4	260	200	110	235	46618	1 / 1
B535236S	7-3/8	270	200	115	240	48119	1 / 1
B535240S	7-1/2	270	200	115	240	50657	1 / 1
B535244S	7-5/8	275	200	115	240	51494	1 / 1
B535248S	7-3/4	280	200	120	245	52113	1 / 1
B535252S	7-7/8	280	200	120	245	53592	1 / 1
B535256S	8	285	200	120	245	55599	1 / 1
B535260S	8-1/8	290	200	120	250	56258	1 / 1
B535264S	8-1/4	290	200	125	250	57502	1 / 1
B535268S	8-3/8	300	200	125	250	59140	1 / 1
B535272S	8-1/2	300	200	125	250	59438	1 / 1
B535276S	8-5/8	305	200	135	260	61945	1 / 1
B535280S	8-3/4	310	200	135	265	64583	1 / 1
B535284S	8-7/8	315	200	140	267	66142	1 / 1

(Make - to - order production)

Notes



A series of horizontal dashed lines for writing notes, filling most of the page.